








REPAIR &  
REFINISHING  
PRODUCTS



PRODUCT GUIDE

# PRODUCT GUIDE

<p>PREP &amp; CLEAN</p>	
<p>REPAIR</p>	
<p>REFINISH</p>	
<p>PROTECTIVE COATINGS</p>	
<p>RUST &amp; CORROSION</p>	



OFFICIAL SPONSOR OF  
**CHAMPIONS**



“Trusted by Stewart-Haas Racing since day one, we use SEM products on all our championship cars.”

**Kevin Harvick**  
Driver of the #4 Stewart-Haas Racing Chevy  
2014 NASCAR Sprint Cup Champion



Made in the USA



[semproducts.com](http://semproducts.com)



The name, likeness, signature of Kevin Harvick and the Kevin Harvick, Incorporated, logo are registered trademarks of Kevin Harvick, Incorporated, and are used under license from Kevin Harvick, Incorporated. ©2015 Stewart-Haas Racing.

# TABLE OF CONTENTS

## CATEGORY

### PREP & CLEAN

Interior & Exterior Prep.....	2-3
Spray Gun Cleaners.....	3

### REPAIR

Adhesives.....	4-6
Plastic Repair.....	7
2K Seam Sealers.....	8-9
1K Seam Sealers.....	9-10
Sound Dampening.....	10-11
Fillers & Glazes.....	11
Repair Equipment.....	12-13

### REFINISH

Clears.....	14-16
Primers.....	17-19
Bumper Coaters.....	19
OEM Refinishing.....	20-21
Trim Paints.....	22-23
Flexible Coatings.....	24-27
Aerospace.....	27
Marine.....	28
Custom Finish.....	29-31
Aerosol Filling.....	32-33
Adhesion Promoters.....	33
General Purpose Aerosols.....	34
Paint Strippers.....	34
UV Cured Clear.....	34

### PROTECTIVE COATINGS

Undercoatings.....	35
Truckbed Liners.....	36-37
Chip Guards.....	38
Coating Equipment.....	38

### RUST & CORROSION

Rust Prevention.....	39
Rust Converters & Sealers.....	39
Rust Coatings.....	41
Rust Equipment.....	42

### ASSORTMENTS

Cabinets, Racks & Counter Displays.....	43-44
---	-------

## BRAND

<b>BUMPER COATER™</b> .....	19
<b>BUMPER BITE™</b> .....	11
<b>CARBO FILL+™</b> .....	11
<b>CLASSIC COAT™</b> .....	24, 44
<b>COLOR COAT™</b>	
Aerosols, Bulk & Mixing Systems.....	26
Aerosol Blanks.....	32-33
<b>COPPERWELD™</b> .....	18, 39
<b>CUSTOM FILL™</b> .....	32
<b>DUAL-MIX™</b> .....	4-11, 43
<b>EZ COAT™</b> .....	20-21
<b>FACTORY PACK™</b> .....	20-21
<b>HOT ROD</b> .....	29-30
<b>MINI-MAX™</b> .....	6-7
<b>METAL BITE™</b> .....	11
<b>METALOCK™</b> .....	18
<b>MULTI-COAT™</b> .....	33
<b>MULTIMAX™</b> .....	34
<b>PRO-TEX™</b> .....	36, 38
<b>ROCK-IT LINER™</b> .....	37
<b>RUST-MORT™</b> .....	39
<b>RUST-SEAL™</b> .....	39
<b>RUST-SHIELD™</b> .....	41
<b>SOLARAY™</b> .....	34
<b>SURE-COAT™</b> .....	25, 27
<b>TRIM BLACK</b> .....	22-23
<b>VINYL COAT™</b> .....	28, 44
<b>WORLD CLASS™</b> .....	14-17
<b>XXX</b>	
Gun Cleaners.....	3, 44
Adhesion Promoter.....	33
Paint Stripper.....	34

## INTERIOR & EXTERIOR PREP

Proper preparation is the foundation to a quality repair. SEM prep products are specifically designed for each substrate to eliminate contaminants and maximize adhesion of top coats and repair materials.



### Scuff & Clean

#### New Product

An abrasive paste that cleans and prepares panels for repair or refinishing.

- Perfect for bumper covers
- Removes grease, wax and road grime
- Uniform scratch improves top coat adhesion
- Rinses clean without residue



38391 | Gallon Pump  
38398 | 16 oz. Tube

#### Suitable substrates:

- Primed or painted surfaces
- Plastic

### SEM Soap

A mild abrasive cleaner used as the first step in refinishing flexible substrates.

- Gravitates into surface and floats contaminants for easy removal
- Mild abrasive helps with adhesion
- Foaming action removes body contaminants, soil and water soluble contaminants



39362 | 16 oz. Tube

#### Suitable substrates:

- Vinyl
- Leather
- Plastic

### Vinyl Prep

A strong solvent blend critical to refinishing vinyl.

- Removes soil, wax and grease
- Temporarily softens substrate
- Promotes adhesion of top coat
- Works quickly



38343 | 16 oz. Aerosol  
38344 | Quart

#### Suitable substrates:

- Vinyl

### Plastic & Leather Prep

A mild solvent blend to clean plastic and leather prior to refinishing.

- Removes mold release, fingerprints, grease and oil
- Promotes adhesion of top coat
- Will not soften or distort plastic parts
- Easy to use



38351 | Gallon  
38353 | 16 oz. Aerosol  
38354 | Quart

#### Suitable substrates:

- Plastic
- Leather
- Carpet
- Velour

### SEM Solve

A virgin solvent blend to clean panels prior to refinish or repair.

- Effectively removes adhesive residue, wax, grease, road tar, oil, silicone, paint overspray and bug remnants
- Easy to use
- Leaves no residue



38371 | Gallon  
38373 | 20 oz. Aerosol  
38374 | Quart  
38375 | 5 Gallon

#### Suitable substrates:

- Bare metal
- Primed or painted surfaces
- SMC & plastic – limit exposure

**Zero VOC  
Surface Cleaner**

**VOC Compliant Everywhere**

A water based cleaner designed to eliminate surface contaminants prior to refinishing.

- Removes dirt, oil, grease, and silicone
- VOC compliant everywhere
- Eliminates static for better blends
- Non-flammable
- Environmentally friendly



40401 | Gallon  
40404 | Quart

**Suitable substrates:**

- Primed or painted surfaces
- Leather
- Vinyl
- Plastic
- Aluminum
- Bare metal - limit exposure

**SPRAY GUN CLEANERS**

Keeping a tool clean will lengthen its service life, saving money in the long run and eliminating costly rework. SEM cleaners are specially formulated to quickly and easily keep equipment looking and operating as new.



**Sprayable Seam Sealer Gun Cleaner**

**New Product**

A blend of solvents to help clean one-component sprayable seam sealer applicators.

- Helps remove sealers from equipment
- Perfect when changing sealer colors
- High strength virgin solvent blend
- Does not contain chlorinated solvents
- Attached straw for tight areas



29433 | 20 oz. Aerosol

Find out more about our **1K Sprayable Seam Sealers** on page 10 and our **1K Sprayable Seam Sealer Applicator** on page 13.

**XXX Gun Cleaner**

**New Larger Size**

A heavy-duty aerosol solvent that quickly cleans spray equipment and aerosol spray tips.

- Removes adhesives, grease, and paint overspray from metal surfaces
- High strength virgin solvent blend
- Does not contain chlorinated solvents
- Attached straw for tight areas
- Quick action formulation



77743 | 20 oz. Aerosol

**XXX Waterborne Gun Cleaner**

Easily removes wet waterborne coatings from spray equipment.

- Removes fisheye-causing contaminants
- Safer than solvent cleaners for waterborne shops
- Does not contain chlorinated solvents
- Convenient aerosol packaging
- Quick action formulation



77753 | 16 oz. Aerosol

**SCUFF & CLEAN  
IS BETTER THAN EVER  
IMPROVED FORMULA  
NEW PACKAGING**



**IMPROVED FORMULA**  
• BETTER SUDSING  
• EASIER RINSING  
• NO SETTLING

# DUAL-MIX™



PARTS & LABOR  
**WARRANTY**  
FOR LIFE  
SEE DETAILS BELOW



TRUSTED  
FOR OVER  
**25 YEARS**

## ADHESIVES

Urethanes, acrylics  
and epoxies for large  
and small applications.

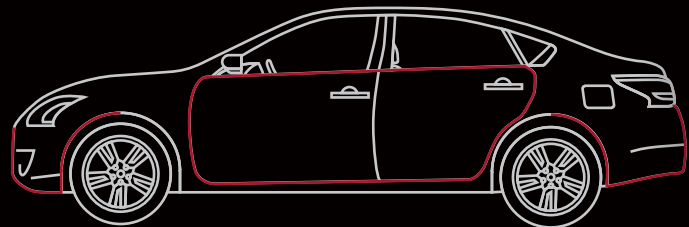
- Roof Skins
- Door Skins
- Applique Panels
- Quarter Panels



## PLASTIC REPAIR

For repairing flexible,  
semi-rigid & rigid  
plastics with ease.

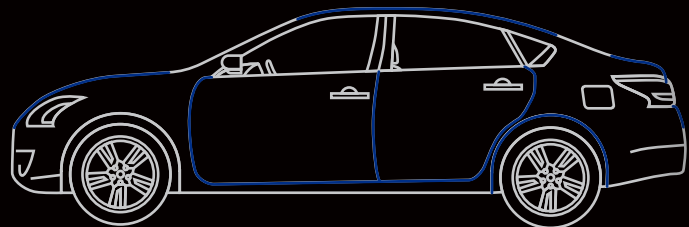
- Bumper Covers
- Interior Plastics
- Molded Body Panels



## SEALERS

Flexible sealers  
that restore OEM  
appearance while  
preventing corrosion.

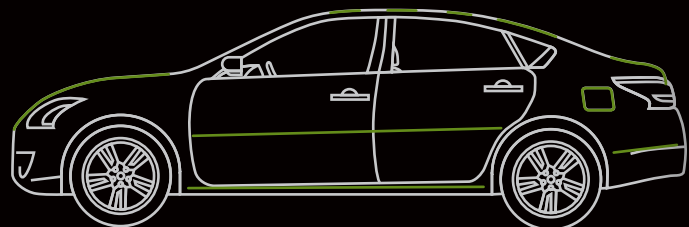
- Roof Skins
- Door Skins
- Strut Towers
- Floor Pans
- Fender Wells
- Body Pans / Trunk Areas



## SOUND DAMPENING

Reduces noise  
and vibrations  
and matches  
OEM textures.

- Roof Bows
- Hoods
- Door Intrusion Beams
- Rocker Panels / Floor Pans
- Quarter Panels
- Body Pans / Trunk Areas
- Deck Lids / Filler Necks



Learn more about  
Dual-Mix at:  
[semproducts.com  
/dual-mix](http://semproducts.com/dual-mix)

### DUAL-MIX FOREVER WARRANTY

When used according to directions, SEM guarantees to the purchaser that all Dual-Mix products will perform to specifications forever. This warranty covers reasonable costs for labor, loss of use of the vehicle, parts and materials only, and excludes consequential or incidental damages.

## ADHESIVES

SEM adhesives are formulated with the technician in mind. With epoxy, acrylic and urethane technologies, no matter the substrate or job size, SEM can cover all your adhesive application needs.



### Dual-Mix™ Multi-Purpose Panel Adhesive

#### Dual-Mix Forever Warranty

A two-component epoxy for panel bonding any combination of steel, aluminum, SMC and fiberglass.

- Long working time
- Exceptional impact and peel strength
- Excellent corrosion resistance
- Includes glass beads for consistent bond line thickness
- Non-sag formula



39747 | 7 oz. 2K Cartridge

**Working Time:** 90 Min  
**Clamp Time:** 4 Hr  
**Cure Time:** 24 Hr  
**Heat Cure Time:** 1 Hr  
**Resin Base:** Epoxy

### Dual-Mix Door Skin & SMC Adhesive

#### Dual-Mix Forever Warranty

A two-component epoxy that quickly bonds any combination of steel, aluminum, fiberglass and SMC.

- Non-sag formula
- Excellent corrosion protection
- Bonds multiple substrates
- Long shelf life



39337 | 7 oz. 2K Cartridge

**Working Time:** 30 Min  
**Clamp Time:** 2 Hr  
**Cure Time:** 24 Hr  
**Heat Cure Time:** 1 Hr  
**Resin Base:** Epoxy

### Dual-Mix Weld-Bond Adhesive

#### Dual-Mix Forever Warranty

A non-sag, two-component acrylic adhesive system formulated to bond metal surfaces without the use of an external primer.

- Exceptional impact and peel strength
- Includes glass beads for consistent bond line thickness
- Long working time



39537 | 7 oz. 2K Cartridge

**Working Time:** 1 Hr  
**Clamp Time:** 3 Hr  
**Cure Time:** 24 Hr  
**Heat Cure Time:** 1 Hr  
**Resin Base:** Acrylic

### Dual-Mix Patch Panel Adhesive

#### Dual-Mix Forever Warranty

A two-component, acrylic adhesive for quickly bonding metal panels without the use of an external primer.

- Exceptional impact and peel strength
- Non-sag formula
- Quick cure time
- Excellent corrosion resistance



39897 | 7 oz. 2K Cartridge

**Working Time:** 10 Min  
**Clamp Time:** 20 Min  
**Cure Time:** 30 Min  
**Heat Cure Time:** 15 Min  
**Resin Base:** Acrylic

### Dual-Mix Non-Sag Fast Set Adhesive

#### Dual-Mix Forever Warranty

A two-component, epoxy-based adhesive for fast bonds on most surfaces.

- Superior adhesion
- Ideal working time
- Bonds multiple substrates



39907 | 7 oz. 2K Cartridge

**Working Time:** 3 Min  
**Clamp Time:** 7 Min  
**Cure Time:** 1 Hr  
**Heat Cure Time:** 15 Min  
**Resin Base:** Epoxy

## Dual-Mix Quick Set 20

### Dual-Mix Forever Warranty

A fast, two-component, opaque, urethane adhesive designed for automotive plastic repair and bonding most small plastic, metal and aluminum parts.

- High strength and sandable
- Bonds multiple substrates
- Non-sag formula fills gaps
- Colorless
- Super fast setting



40207 | 7 oz. 2K Cartridge  
40202 | 1.7 oz. 2K Cartridge

**Working Time:** 15 Sec  
**Set Time:** 20 Sec  
**Cure Time:** 15 Min  
**Resin Base:** Urethane

## Dual-Mix Quick Set 50

### Dual-Mix Forever Warranty

A fast, two-component, black, urethane adhesive designed for automotive plastic repair and bonding most small plastic, metal and aluminum parts.

- High strength and sandable
- Bonds multiple substrates
- Non-sag formula fills gaps



40507 | 7 oz. 2K Cartridge  
40502 | 1.7 oz. 2K Cartridge

**Working Time:** 45 Sec  
**Set Time:** 50 Sec  
**Cure Time:** 15 Min  
**Resin Base:** Urethane

## Dual-Mix Quick Set 180

### Dual-Mix Forever Warranty

#### New Product

A general purpose, black adhesive designed for repairing and bonding most plastic, steel, aluminum, glass, SMC and fiberglass parts.

- High strength and sandable
- Bonds multiple substrates
- Non-sag formula fills gaps
- Extended 3 minute working time



41807 | 7 oz. 2K Cartridge

**Working Time:** 3 Min  
**Set Time:** 30 Min  
**Cure Time:** 24 Hr  
**Resin Base:** Urethane

## Mini-Max™ Clear Fast Set Adhesive

A two-component clear epoxy for an invisible bond on plastic, metal, fiberglass and wood.

- Superior adhesion
- High strength
- Fast cure
- Bonds multiple substrates



68442 | 1 oz. 2K Cartridge

**Working Time:** 2 Min  
**Set Time:** 5 Min  
**Cure Time:** 1 Hr  
**Resin Base:** Epoxy

## Mini-Max General Purpose Adhesive

A two-component epoxy based adhesive for fast bonds on most surfaces.

- Superior adhesion
- Ideal working time
- Bonds multiple substrates
- Isocyanate free



68432 | 1 oz. 2K Cartridge

**Working Time:** 3 Min  
**Set Time:** 7 Min  
**Cure Time:** 1 Hr  
**Heat Cure Time:** 15 Min  
**Resin Base:** Epoxy

## Insta-Bond

A general purpose, cyanoacrylate adhesive for bonding trim pieces, emblems, moldings and other small parts. **Insta-Bond Accelerator** is a chemical catalyst for acrylic adhesives.

- Holds torn plastic together during repair
- Provides high strength bonds
- Also for use on vinyl, metal and glass
- Accelerator creates an instant bond



39310 | 3 oz. Kit  
39311 | 1 oz. Adhesive  
39312 | 2 oz. Accelerator



## PLASTIC REPAIR

Increase shop revenue through plastic repair. From bumpers and ground effects to trim components and mirrors, repairing plastic parts is often less expensive than replacement. SEM plastic repair products allow you to fill, repair and contour plastic parts with ease.



### Dual-Mix™ Multi-Plastic Repair Material

#### Dual-Mix Forever Warranty

A two-component epoxy for fast repairs on virtually all plastic bumper covers.

- No adhesion promoter required
- Exceptional sanding and feather edging
- Remains flexible
- Does not shrink or pinhole
- Excellent leveling and sag resistance



39847 | 7 oz. 2K Cartridge

**Working Time:** 7 Min  
**Sand Time:** 15 Min  
**Top Coat Time:** 20 Min  
**Cure Time:** 1 Hr

### Dual-Mix Problem Plastic Repair Material

#### Dual-Mix Forever Warranty

A two-component, epoxy-based filler for repairing olefin-based plastics and similar rigid and semi-rigid substrates, and SMC.

- No adhesion promoter required
- Superior adhesion
- Excellent sanding and feather edging
- Does not shrink or pinhole
- Zero VOC



39767 | 7 oz. 2K Cartridge

**Working Time:** 5 Min  
**Sand Time:** 15 Min  
**Top Coat Time:** 20 Min  
**Cure Time:** 1 Hr

### Mini-Max™ Bumper Repair Material

A two-component, epoxy-based filler for repairing small damage to bumpers and rigid or semi-rigid plastics.

- No adhesion promoter required
- Superior adhesion
- Excellent sanding and feather edging
- Does not shrink or pinhole
- Zero VOC



68422 | 1 oz. 2K Cartridge

**Working Time:** 5 Min  
**Sand Time:** 15 Min  
**Top Coat Time:** 20 Min  
**Cure Time:** 1 Hr

### Plastic Repair Reinforcing Tape

A non-backed mesh tape to strengthen repairs on plastic and fiberglass.

- Light adhesive for easy application
- Ideal width for tears
- Use with all plastic repair materials



70006 | 36' Roll

### Plastic Repair Contouring Tape

A film backed reinforcing tape used to strengthen repairs on plastic and fiberglass and for creating or repairing bumper tabs.

- Backing material perfect for tab repair
- Ideal width for holes and larger repairs
- Use with all fillers



70007 | 15' Roll

## 2K SEAM SEALERS

Proper sealing is the only way to ensure the correct appearance and complete corrosion protection of your repairs. SEM has a comprehensive line of two-component seam sealers to meet your repair requirements.



### Dual-Mix™ Seam Sealer

#### Dual-Mix Forever Warranty

A two-component, gray, epoxy sealer for sealing interior or exterior seams, joints and voids.

- **Direct to metal**
- **Paintable immediately\***
- Excellent adhesion to bare metal or primed surfaces
- Will not shrink, harden or crack
- Duplicates OEM sealers



39377 | 7 oz. 2K Cartridge

**Working Time:** 10 Min  
**Set Time:** 15 Min  
**Top Coat Time:** 0 Min  
**Cure Time:** 1 Hr

\* Paintable immediately with most solvent based paint systems.

### Dual-Mix Self Leveling Seam Sealer

#### Dual-Mix Forever Warranty

A two-component, epoxy-based, flowable sealer for use on drip rails, roof and trunk seams.

- **Direct to metal on non-flexing roof skins**
- Excellent self leveling properties
- Flows into crevices
- Will not shrink, harden or crack
- Permanently flexible



39387 | 7 oz. 2K Cartridge

**Working Time:** 10 Min  
**Set Time:** 15 Min  
**Top Coat Time:** 15 Min  
**Cure Time:** 1 Hr

### Dual-Mix High-Build Self Leveling Seam Sealer

#### Dual-Mix Forever Warranty

A two-component, controlled flow epoxy ideal for use on roof seams, drip rails and trunk seams.

- **Direct to metal on non-flexing roof skins**
- Will not shrink, harden or crack
- Permanently flexible



39777 | 7 oz. 2K Cartridge

**Working Time:** 10 Min  
**Set Time:** 15 Min  
**Top Coat Time:** 15 Min  
**Cure Time:** 1 Hr

### Beige Seam Sealer

A two-component epoxy for sealing interior or exterior seams, joints and voids.

- **Direct to metal**
- **Paintable immediately\***
- Excellent adhesion to bare metal or primed surfaces
- Will not shrink, harden or crack
- Duplicates OEM sealers



39477 | 7 oz. 2K Cartridge

**Working Time:** 10 Min  
**Set Time:** 15 Min  
**Top Coat Time:** 0 Min  
**Cure Time:** 1 Hr

\* Paintable immediately with most solvent based paint systems.

### Heavy Bodied Seam Sealer

A high viscosity, two-component epoxy for use on interior or exterior seams, joints and voids.

- **Direct to metal**
- **Paintable immediately\***
- Holds tool marks during working time
- Non-sag formula
- Excellent adhesion



40377 | Black | 7 oz. 2K Cartridge  
 40477 | White | 7 oz. 2K Cartridge

**Working Time:** 10 Min  
**Set Time:** 15 Min  
**Top Coat Time:** 0 Min  
**Cure Time:** 1 Hr

\* Paintable immediately with most solvent based paint systems.



# SEAM SEALERS

# DIRECT-TO-METAL

# PAINTABLE IMMEDIATELY

ONE-COMPONENT AND TWO-COMPONENT TECHNOLOGY

DUPLICATE OEM TEXTURED SEAMS

PERMANENTLY FLEXIBLE

WILL NOT SHRINK, HARDEN OR CRACK

ADD OR REPLACE OEM SOUND DAMPENING



**NOTE:**  
Paintable immediately  
with most solvent  
based paint systems.

## 1K SEAM SEALERS

Utilizing the latest in modified silane polymer technologies, SEM has a complete line of one-component seam sealers to meet your repair requirements.



### 1K Seam Sealer

A versatile, single component, MSP sealer for sealing interior or exterior seams, joints, and voids.

- Direct to metal
- Paintable immediately\*
- Non-sag formula
- Excellent adhesion
- Remains flexible without shrinking or cracking
- Color matches many OEM sealers
- Optimal working time



10.1 oz. Tube  
 29362 | White  
 29372 | Gray  
 29382 | Beige  
 29392 | Black

**Working Time:** 5 – 10 Min  
**Top Coat Time:** 0 – 24 Hr

\* Paintable immediately with most solvent based paint systems.

### 1K Sprayable Seam Sealer

A high performance, sprayable MSP seam sealer for duplicating OEM sprayed seams and sound dampening.

- Direct to metal
- Paintable immediately\*
- Excellent adhesion
- Remains flexible without shrinking or cracking
- Color variety to match OEM sealers
- Optimal working time



9.5 oz. Tube  
 29462 | White  
 29472 | Gray  
 29482 | Beige  
 29492 | Black

**Working Time:** 5 – 10 Min  
**Top Coat Time:** 0 – 24 Hr

\* Paintable immediately with most solvent based paint systems.

## SOUND DAMPENING

Sound dampening is the key to reducing noise and vibration when completing repairs on roofs, quarter panels or other vehicle cavities. SEM products are formulated with this solution in mind.



### Dual-Mix™ Panel Vibration Control Material

#### Dual-Mix Forever Warranty

A two-component epoxy and urethane blend for reducing noise and vibration on roof, quarter and door skins.

- OEM recommended
- Excellent sag resistance
- Reduces noise and vibration
- Protects against corrosion
- Superior flexibility



39977 | 7 oz. 2K Cartridge

**Working Time:** 1 Hr  
**Set Time:** 1 Hr  
**Cure Time:** 1 Hr

### Dual-Mix Sound & Seal Sprayable Coating

#### Dual-Mix Forever Warranty

A sprayable epoxy and urethane blend for replacing OEM coatings under rocker panels, in trunks, and on floor sections and frame rails.

- Will not shrink, harden or crack
- Remains flexible
- Excellent adhesion to properly prepped surfaces
- Paintable in 30 min



40977 | 7 oz. 2K Cartridge

**Working Time:** 10 Min  
**Set Time:** 15 Min  
**Top Coat Time:** 30 Min  
**Cure Time:** 1 Hr

### Dual-Mix™ Flexible Urethane Foam

#### Dual-Mix Forever Warranty

A two-component, urethane, expanding flexible foam that stops vibration and dampens sound in most voids.

- Excellent sound dampening qualities
- Stops panel flutter
- 10x volume expansion
- Does not require moisture to cure
- Will not distort panels
- Resists shrinking



39357 | 7 oz. 2K Cartridge

**Working Time:** 15 Sec  
**Set Time:** 2 Min  
**Top Coat Time:** 15 Min

### Dual-Mix Rigid Urethane Foam

#### Dual-Mix Forever Warranty

A two-component, urethane, expanding rigid foam for filling pillars, posts, and box sections.

- Meets UL 94HB flammability tests
- Restores crash parts to OEM condition
- Superior expansion
- Reinforces weak panels
- Fast cure



39997 | 7 oz. 2K Cartridge

**Working Time:** 15 Sec  
**Set Time:** 2 Min  
**Top Coat Time:** 15 Min

## FILLERS & GLAZES

When repairing pinholes, scratches and minor damage, SEM has a range of high quality products to suite your needs. All SEM fillers and glazes come with the same cream hardener reducing likelihood of hardener errors.



### Metal Bite™ Finishing Glaze

A two-component, polyester finishing glaze that quickly fills sand scratches and other minor imperfections.

- Fast drying to a tack free finish
- Seals the repair area and prevents staining
- Exceptional sanding and feather edging
- Outstanding adhesion
- Use on aluminum, steel, SMC and fiberglass



39592 | 24 oz. Tube

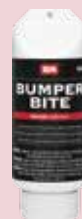
39128 | 1 oz. Hardener included

**Working Time:** 5 Min  
**Sand Time:** 15 Min

### Bumper Bite™ Flexible Glaze

A two-component flexible polyester filler that quickly fills sand scratches, pinholes, and other minor imperfections on many automotive substrates.

- Smooth, tack free finish
- Superior sanding qualities
- Remains flexible
- Excellent adhesion
- Dries quickly
- Use on most plastics, aluminum and steel



40482 | 16 oz. Tube

39128 | 1 oz. Hardener included

**Working Time:** 5 Min  
**Sand Time:** 15 Min

### Carbo Fill+™

A carbon fiber enriched filler for repairing SMC, fiberglass, PP, steel and aluminum.

- Carbon fiber for added strength
- Prevents swelling
- Resists staining and shrinkage
- Eliminates halo effect
- Easy to sand in 10-15 minutes
- Excellent corrosion control



40542 | 16 oz. Tube

39128 | 1 oz. Hardener included

**Working Time:** 5 Min  
**Sand Time:** 15 Min

## REPAIR EQUIPMENT

Applicators, tips and accessories for professional and efficient application of SEM repair materials.



### 2K REPAIR EQUIPMENT



#### Universal Manual Applicator

A sturdy applicator for DIYers and pros alike. Dispenses material quickly and consistently and is easy to use because of the ergonomic design. Accepts 2:1 and 1:1, 7 oz. cartridges.

71119 | Applicator

- Ensures proper mix ratio
- Ideal gear ratio for smooth dispersion
- Release button for precision



#### Universal Pneumatic Applicator

This applicator is a must-have in body shops. Delivers material quickly and consistently. The lightweight and balanced design means less fatigue for the technician. Accepts 2:1 and 1:1, 7 oz. cartridges.

70039 | Applicator

- Decreases fatigue
- Increases efficiency
- Smooth, even dispensing
- Adjustable flow rate
- Use with optional **Quick Spray System**

#### 1.7 oz. Manual Applicator

An easy loading applicator for dispensing 1.7 oz. cartridges. Material is dispensed quickly and consistently.

- Ensures proper mix
- Ideal for small repairs
- Mechanical advantage for easy dispensing



70019 | Applicator

### 2K REPAIR ACCESSORIES

#### Integral Nut Square Static Mixer

Ensures the proper mix ratios for 7 oz. 2K cartridges.

70011 | 6 Pack  
70012 | 50 Pack



#### Versa-Tip

Allows you to duplicate OEM sealers. Cut to dispense product from 0.5" – 1.5" wide.

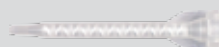
70070 | 6 Pack



#### 1.7 oz. Turbo Mixer

Ensures the proper mix ratios for 1.7 oz. cartridges.

70020 | 6 Pack  
70021 | 50 Pack



#### Quick Spray System Static Mixer

Ensures the proper mix ratios. Use with the **Quick Spray System** only.

70103 | 6 Pack



QUICK SPRAY SYSTEM AND ACCESSORIES EQUIPMENT



Quick Spray System

Our **Quick Spray System** allows users to duplicate OEM seam sealer textures and sound dampening pads while utilizing the 2K technology of **SEM Seam Sealers**.

- Duplicate OEM sprayed seams
- Easy assembly and clean up
- For use on trunks, doors, wheel wells and more

NOTE:

**70039 Universal Pneumatic Applicator** is not included in the **70100** kit. Only use the **Quick Spray System** with specified SEM products.

70100 | Quick Spray System Starter Kit

- Contains:**
- 6 Quick Spray System Static Mixers
  - 1 Air Baffle
  - 1 Adapter Assembly
  - 1 Retaining Ring
  - 1 Round Air Cap
  - 1 Flat Air Cap
  - 1 PU Tubing

USE WITH:

- 39377 Dual-Mix™ Seam Sealer
- 39477 Beige Seam Sealer
- 40377 Heavy Bodied Black Seam Sealer
- 40477 Heavy Bodied White Seam Sealer
- 40977 Dual-Mix Sound & Seal Sprayable Coating

Adapter Assembly

An air regulator and hose for the **Quick Spray System** only.

70104 | Kit



Air Baffle

Atomization tips used with the **Quick Spray System** only.

70106 | 5 Pack



Round Air Assembly

A round air cap and baffle for use in the **Quick Spray System** only.

70101 | 1 Assembly



Flat Air Assembly

A flat air cap and baffle for use in the **Quick Spray System** only.

70102 | 1 Assembly



1K REPAIR EQUIPMENT AND ACCESSORIES



1K Pneumatic Applicator

An air-driven applicator gun designed for use with **SEM 1K Seam Sealers**.

29342 | 1 Applicator

- Reduces hand fatigue
- Adjustable flow rate
- Dispenses product consistently
- Ideal for frequent use or large jobs



1K Sprayable Seam Sealer Applicator

A premium applicator for **SEM 1K Sprayable Seam Sealers**.

29442 | 1 Applicator

- Fully adjustable to match most sprayed seams
- Spray sound dampening pads
- Tight patterns with minimal overspray
- Able to apply material in beads
- No clean up if used regularly

1K Seam Sealer Nozzle

Designed for use with **1K Seam Sealers**.

29352 | 15 Pack



1K Door Skin Nozzle

Designed for use with the **1K Sprayable Seam Sealer Applicator**.

29312 | 6 Pack



1K Extrusion Nozzle

Designed for use with the **1K Sprayable Seam Sealer Applicator**.

29322 | 6 Pack



Sprayable Seam Sealer Gun Cleaner

Cleans the **1K Sprayable Seam Sealer Applicator**.

29433 | 20 oz. Aerosol

See page 3 for complete details.



## CLEARs

Durability, gloss and optimal performance on every job. Technicians experience easy application and fast dry times without dieback, no matter the VOC level or mix ratio. SEM clears maintain their finish for years.



### World Class™ EZ Finish™ Clearcoat

4.4 VOC | 4:1 Mix

#### New Product

A national rule, urethane clearcoat for automotive refinishing in every climate, with any gun, for any painter.

- 24 Month Warranty
- Simple, two coat application
- Lays flat
- High gloss & DOI
- Cures quickly and thoroughly
- Exceptional sanding and buffing properties
- Excellent UV protection



- 50501 | Clearcoat | Gallon
- 50504 | Clearcoat | Quart
- 50554 | Fast Activator | Quart
- 50556 | Fast Activator | Half Pint
- 50564 | Medium Activator | Quart
- 50566 | Medium Activator | Half Pint
- 50574 | Slow Activator | Quart
- 50576 | Slow Activator | Half Pint

### World Class Universal Clearcoat

4.2 VOC | 4:1 Mix

A high quality, versatile, two-component urethane clearcoat for collision shops.

- 24 Month Warranty
- Two coat application
- Superior vertical hold
- Exceptional gloss and DOI
- Chemical resistant
- Excellent UV protection
- 4 activator speeds



- 50421 | Clearcoat | Gallon
- 50424 | Clearcoat | Quart
- 50444 | Air Dry Activator | Quart
- 50446 | Air Dry Activator | Half Pint
- 50454 | Fast Activator | Quart
- 50456 | Fast Activator | Half Pint
- 50464 | Medium Activator | Quart
- 50466 | Medium Activator | Half Pint
- 50474 | Slow Activator | Quart
- 50476 | Slow Activator | Half Pint

### World Class 4.2 VOC Euro Clear

4.2 VOC | 2:1 Mix

A high quality, national rule, two-component urethane clearcoat for productive collision shops.

- 24 Month Warranty
- Excellent flow and leveling
- Exceptional gloss and DOI
- Chemical resistant
- Easy to buff
- Excellent UV protection
- 4 activator speeds



- 50809 | Clearcoat | 5.0 Liters
- 50842 | Extra Fast Activator | 2.5 Liters
- 50852 | Fast Activator | 2.5 Liters
- 50862 | Medium Activator | 2.5 Liters
- 50872 | Slow Activator | 2.5 Liters

### World Class Production Clearcoat

2.1 VOC | 4:1 Mix

A higher solids, 2.1 VOC compliant, two-component clearcoat for collision shops in regulated areas.

- 24 Month Warranty
- Great product at mid-grade price
- Two coat application
- Excellent vertical hold
- Firm after bake
- Easy to buff
- Excellent UV protection



- 50211 | Clearcoat | Gallon
- 50214 | Clearcoat | Quart
- 50254 | Fast Activator | Quart
- 50256 | Fast Activator | Half Pint
- 50264 | Medium Activator | Quart
- 50266 | Medium Activator | Half Pint
- 50274 | Slow Activator | Quart
- 50276 | Slow Activator | Half Pint

### World Class 2.1 VOC Euro Clear

2.1 VOC | 2:1 Mix

A higher solids, 2.1 VOC compliant, two-component clearcoat for collision shops in regulated areas.

- 24 Month Warranty
- Great product at mid-grade price
- Exceptional appearance
- Chemical resistant
- Easy to buff
- Excellent UV protection



- 50709 | Clearcoat | 5.0 Liters
- 50752 | Fast Activator | 2.5 Liters
- 50762 | Medium Activator | 2.5 Liters
- 50772 | Slow Activator | 2.5 Liters



## World Class™ Accelerator

### New Product

Increases productivity by reducing full cure time of urethane coatings.

- Reduces cure times
- Cuts handle time by 25%
- Only 0.5 oz. needed per sprayable quart
- For use with all **World Class** clears



50918 | Pint

## World Class Pot Life Extender

### New Product

Increases the pot life of urethane coatings in extreme hot and humid conditions.

- Doubles the pot life of urethane coatings
- Excellent for low VOC coatings
- For use with all **World Class** clears



50928 | Pint

## 1K HS Clear

An aerosol packaged, acrylic clearcoat, perfect for protecting refinish color on small accessories, door jambs, and new part cut-ins.

- Shop floor compliant (NESHAP)
- Saves mixing time and eliminates waste
- UV resistant – good color holdout
- Quick drying for increased production
- Lays flat for professional results



40903 | 20 oz. Aerosol

Find out how to reduce labor up to 85% using the OEM Refinishing System™ on pages 20 & 21.

## 1K HS Semi-Gloss Clear

### New Product

A mid-gloss, aerosol, acrylic clearcoat for duplicating OEM lower gloss panels.

- Matches underhood gloss
- Quick-dry formula reduces cycle time
- Shop floor compliant (NESHAP)
- Professional spray pattern
- Sprays evenly without streaks
- Saves mixing time and eliminates waste



40913 | 20 oz. Aerosol

Find out how to reduce labor up to 85% using the OEM Refinishing System on pages 20 & 21.

## Blenz-In

An aerosol blending solvent designed to melt the edge of two-component urethane refinish top coats into the existing coating. Keeps repairs to a single panel by creating an invisible blend.

- Saves time and money
- Seamless blends
- Use with most clearcoats
- 100% UV stable
- Shop floor compliant (NESHAP)



38403 | 20 oz. Aerosol

## Hot Rod Clear

### 2.1 VOC Compliant

Provides the ultimate, custom, low gloss look on any color when painting accent stripes, hoods or entire vehicles.

See page 30 for complete details.



# BE THE FIRST TO KNOW

LEARN ABOUT NEW PRODUCTS, PROMOTIONS, TRAINING AND SOPs

[SEMPRODUCTS.COM/FIRST](http://SEMPRODUCTS.COM/FIRST)  
TO LEARN MORE & SIGN UP TODAY



**WORLD CLASS™**

**PRIMERS & CLEARS**

**MADE IN  THE USA**

# GREAT PRODUCTS GREAT PRICES

SEM World Class™ offers highly efficient and productive primers and clears at an affordable price. Formulated with the latest resin technologies, these primers and clears produce optimal film build from 2 coats.

---

## EZ FINISH™ CLEARCOAT

---

# EZ APPLICATION EZ FINISHING

**24 MONTH  
WARRANTY  
ON CLEARS**

**PRODUCT & LABOR**

Learn more about  
World Class Primers  
& Clears at:

[semproducts.com/  
world-class-  
primers-clears/](http://semproducts.com/world-class-primers-clears/)

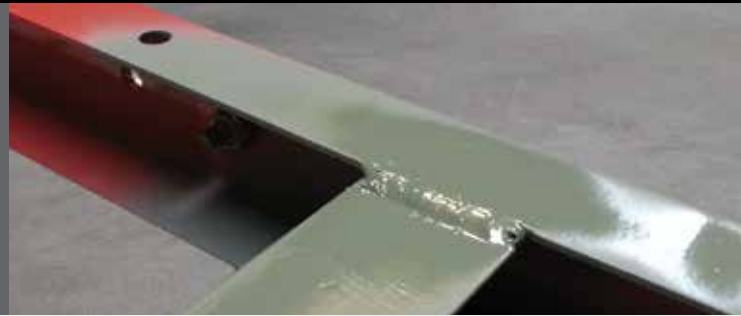


**PROUDLY  
MADE  
IN THE  
USA**



## PRIMERS

SEM fast drying primers achieve ideal film build, and apply and sand easily. With a product for every substrate, application, and environment, SEM primers are a great foundation for solvent or waterborne color.



### World Class™ DTM Primer

**2.1 VOC | 4:1 Mix**

A two-component epoxy that provides bare metal adhesion and filling in one product.

- 2.1 mixed VOC
- Outstanding adhesion on metal, fiberglass, aluminum
- Excellent corrosion control
- Builds quickly, sands easily
- Excellent color holdout



50121 | Primer | Gallon  
50124 | Primer | Quart  
50134 | Activator | Quart  
50136 | Activator | Half Pint

### World Class HS Urethane Primer

**4.2 VOC | 4:1 Mix**

A premium, high build, two-component, urethane primer for use on automotive substrates.

- 4.2 mixed VOC
- Outstanding adhesion
- Excellent filling properties
- Sands quickly
- Excellent color holdout



50151 | Primer | Gallon  
50154 | Primer | Quart  
50444 | Air Dry Activator | Quart  
50446 | Air Dry Activator | Half Pint  
50454 | Fast Activator | Quart  
50456 | Fast Activator | Half Pint  
50464 | Medium Activator | Quart  
50466 | Medium Activator | Half Pint  
50474 | Slow Activator | Quart  
50476 | Slow Activator | Half Pint

### World Class Acrylic Primer Surfacer

**2.1 VOC | 1:1 Mix**

A compliant coating for quick and easy priming of spots or complete panels.

- 2.1 VOC compliant
- Excellent filling properties
- Sands quickly
- Good color holdout
- Excellent adhesion
- Available in gallons and quarts



50101 | Gallon  
50104 | Quart

### World Class Waterborne Flexible Primer

**2.1 VOC | Ready to Spray**

A water-based flexible surfacer designed for automotive bumper refinishing.

- Superior flexibility and adhesion
- Works as a barrier coat to prevent lifting
- Excellent filling properties
- Easy to sand
- 2.1 VOC compliant and environmentally friendly
- Saves time and labor
- Ready to spray – no mixing



50184 | Quart

### High Build Primer Surfacer

An elastomeric acrylic coating for priming metal, aluminum, urethane, fiberglass and plastics.

- Provides superior adhesion
- Excellent filling properties
- Works on flexible or rigid substrates
- Easy to sand
- Topcoat with most refinish material
- Shop floor compliant (NESHAP)



20 oz. Aerosol

42003 | Black  
42013 | Gray  
42023 | Beige  
42033 | Rose  
42043 | White

### Self Etching Primer

#### VOC Compliant

A first-step coating that provides excellent adhesion to bare substrates.

- Excellent adhesion to steel, aluminum and stainless steel
- Quick drying
- 3 colors available - black, gray and green
- Aerosols are shop floor compliant (NESHAP)
- Bulk products are VOC compliant



- 39671 | Black | Gallon
- 39673 | Black | 20 oz. Aerosol
- 39674 | Black | Quart
- 39681 | Gray | Gallon
- 39683 | Gray | 20 oz. Aerosol
- 39684 | Gray | Quart
- 39691 | Green | Gallon
- 39693 | Green | 20 oz. Aerosol
- 39694 | Green | Quart

### Copperweld™ and Brushable Copperweld™

A weld-through primer for superior corrosion protection between welded substrates.

- Copper and zinc-enriched
- Exceptional conductivity
- Minimizes the heat zone
- Reduces distortion and splatter
- Superior corrosion protection
- Great sprayability and coverage
- Fast drying
- Aerosol is shop floor compliant (NESHAP)



- 40783 | 20 oz. Aerosol
- 40786 | Brushable | 8 oz. can

### Flexible Primer Surfacer

A time saving coating that provides superior film build and flexibility when refinishing bumper covers and other plastics.

- Ready to spray
- Quick drying
- Easy to sand
- Flexible formulation
- Topcoat with most refinish materials
- 100x more flexible
- Aerosol is shop floor compliant (NESHAP)



- 39131 | Gallon
- 39133 | 16 oz. Aerosol
- 39134 | Quart

### Waterborne Flexible Primer Surfacer

#### 2.1 VOC Compliant

A waterborne elastomeric coating for priming urethanes, plastics and other similar substrates.

- Superior adhesion
- Excellent sealing properties
- VOC compliant and environmentally friendly
- High solids formula
- Topcoat with most refinish material
- Sands easily
- Saves time and labor
- Ready to spray – no mixing



- 39221 | Gallon

### Metallock™ DTM High Build Primer

A two-component, epoxy primer for use on steel, aluminum, SMC and fiberglass.

- Superior adhesion
- Outstanding corrosion protection
- Exceptional filling properties
- High build formula
- Sealer mixing option
- Easy to sand



- ML010 | Kit

#### KIT CONTAINS:

- 1 – ML011 | Primer | Gallon
- 1 – MLH14 | Hardener | Quart

#### SOLD SEPARATELY:

- ML014 | Primer | Quart
- MLH16 | Hardener | Half Pint

### Weld-Thru Primer

A zinc-enriched coating that provides corrosion protection between welded substrates while minimizing distortion and welding splatter.

- Superior corrosion protection between welded parts
- Excellent adhesion
- Ideal conductivity
- Fast drying
- Applies easily
- Shop floor compliant (NESHAP)



- 39783 | 16 oz. Aerosol

### Guide Coat Black

Aerosol coating that helps detect low spots, sand scratches or other minor imperfections prior to sanding primer.

- Quick drying
- Improves production
- Won't clog sandpaper
- Helps create a perfect repair



38203 | 16 oz. Aerosol

## BUMPER COATERS

Increase shop revenue by repairing or restoring bumper covers. With multiple OEM matched colors and formulas to eliminate adhesion promoter or meet VOC restrictions, SEM Bumper Coater™ is the perfect choice.



### Flexible Bumper Coater™

An advanced coating formulated to restore the OEM finish on automotive bumpers and plastic cladding.

- **No adhesion promoter required**
- No primer required
- Excellent adhesion and durability
- Matches OEM appearance
- Retains flexibility
- Great coverage
- Professional results



39101 | Black | Gallon  
 39103 | Black | 16 oz. Aerosol  
 39104 | Black | Quart

### Low VOC Flexible Bumper Coater™

#### 2.8 VOC Compliant

A black, flexible coating designed for easy reconditioning of most plastic bumpers.

- Superior adhesion
- OEM matched color and gloss
- Great for flexible or rigid substrates
- Easy to apply
- Excellent hiding



39101-LV | Black | Gallon  
 39104-LV | Black | Quart

### Bumper Coater™ Aerosols

A line of advanced coatings formulated to restore the OEM finish on automotive bumpers and plastic cladding. **Bumper Coater** aerosols are shop floor compliant (NESHAP).

16 oz. Aerosol

- 39023 | Med. Driftwood Metallic
- 39073 | Gloss Silver
- 39083 | Gloss Black
- 39103 | Flexible Black
- 39153 | Charcoal
- 39163 | Med. Smoke
- 39173 | Dk. Smoke
- 39183 | Med. Gray
- 39193 | Dk. Gray

- **No adhesion promoter required**
- No primer required
- Excellent adhesion and durability
- Matches OEM appearance
- Retains flexibility
- Great coverage
- Professional results

16 oz. Aerosol

- 39253 | Med. Titanium Metallic
- 39263 | Dk. Titanium Metallic
- 39273 | Charcoal Metallic
- 39283 | Lt. Titanium Metallic
- 39293 | Honda Black
- 39413 | Med. Platinum Metallic
- 39423 | Med. Quartz Metallic
- 39583 | Lt. Charcoal





# OEM REFINISHING SYSTEM™

# REDUCE LABOR UP TO 85%

## WHEN REFINISHING SUPPORT PARTS, CUT-INS & JAMBS

### TIME SAVINGS

GO TO WEBSITE  
FOR FULL STUDY

RADIATOR SUPPORT EXAMPLE	MOVING CAR	MIXING	APPLICATION	CLEANING GUN
<b>OEM REFINISHING SYSTEM</b>	N/A – No need for booth	N/A – No mixing aerosols	18 Min	N/A – No gun is used
<b>TRADITIONAL METHOD</b>	20 Min	10 Min	2 Hr	6 Min

### Ez Coat

Matches OEM e-coat.

Available in 7 popular colors:  
Black, Olive Green, Light Green,  
Gray, Tan, Olive Brown, White.

### Factory Pack

Real automotive basecoat  
in an aerosol.

- 40 OEM matched colors
- 178 crossovers
- 17 car manufacturers

### 1K HS Clear or 1K HS Semi-Gloss Clear

Adds gloss and protects  
the repair. Quick drying for  
increased production.



### SEE THE FULL STUDY



Visit  
[semproducts.com/ors](http://semproducts.com/ors)  
to see a video demo,  
full time comparison,  
color samples and  
booklet with instructions.

## OEM REFINISHING SYSTEM™

Reduce cycle time to increase throughput with SEM's OEM Refinishing System. Shop floor compliant (NESHAP) aerosols eliminate mixing paint, waiting on a painter, tying up the paint booth, and cleaning spray guns. Now you can quickly refinish support parts, cut-ins and jambs.



For more information visit:  
[semproducts.com/ors](http://semproducts.com/ors)

### Factory Pack™

A unique, time saving aerosol basecoat for jambs, cut-ins, small accessories, and touch ups.

- 178 crossovers from 17 car manufacturers
- Saves hours per job
- Lower material cost
- Reduces booth bottlenecks
- Superior adhesion, flexibility, and hiding
- Shop floor compliant (NESHAP)
- Should be clear coated



16 oz. Aerosol

Crossover manufacturers include Ford, Honda, Toyota, GM, BMW, Chrysler, Hyundai, Kia, Mazda, Mercedes and Nissan.

- 19013 | Silver Frost
- 19023 | White
- 19033 | Dk. Shadow Grey
- 19043 | Redfire Pearl
- 19053 | Torreador Red Metallic
- 19063 | Pueblo Gold
- 19073 | Vermillion
- 19083 | Dk. Blue Pearl
- 19093 | Silver Metallic
- 19103 | Black

- 19133 | Atomic Blue
- 19143 | Black Pearl
- 19163 | Alabaster Silver
- 19173 | Desert Mist Metallic
- 19183 | Royal Blue Pearl
- 19193 | Polished Gray Metallic
- 19203 | Milano Red
- 19213 | Tango Red
- 19223 | Taffeta White
- 19233 | Mocha Metallic

- 19253 | Millenium Silver
- 19263 | Lunar Mist Metallic
- 19273 | Phantom Gray
- 19283 | Super White
- 19293 | Black
- 19303 | Titanium
- 19313 | Desert Sand Pearl
- 19323 | Natural White
- 19353 | Red Pearl
- 19363 | Magnetic Gray Pearl

- 19373 | White
- 19393 | Victory Red
- 19403 | Olympic White
- 19423 | Black
- 19433 | Lt. Tarnished Silver
- 19443 | Galaxy Silver Metallic
- 19453 | Cashmere
- 19463 | Dk. Blue Metallic
- 19473 | Pewter Metallic
- 19483 | Gold Mist Metallic

### Ez Coat™

A unique, direct to metal coating that matches the color and gloss of factory primer and e-coat colors.

- Duplicates factory appearance
- Direct to steel and aluminum
- Quick curing and hiding
- Available in 7 popular OEM colors
- Paintable with most automotive basecoats
- Excellent corrosion control
- Shop floor compliant (NESHAP)



16 oz. Aerosol

- 62213 | Black
- 62223 | Olive Green
- 62233 | Light Green
- 62243 | Gray
- 62253 | Tan
- 62263 | Olive Brown
- 62273 | White

### Ez Coat™ 6 Pack Assortment

Contains 1 each of Black, Olive Green, Light Green, Gray, Tan and Olive Brown.

62209 | 6 Pack



### Aerosol Clears

Acrylic clearcoats, perfect for protecting refinish color on small accessories, door jambs, and new part cut-ins.

- 40903 | Gloss | 20 oz. Aerosol
- 40913 | Semi-Gloss | 20 oz. Aerosol

See page 15 for complete details.



**BEFORE**



**AFTER**



### TRIM PAINTS

The standard by which all others are measured, SEM Trim Black professionally restores the OEM look of automotive trim components. With several options to match color and gloss, SEM brings high performance flexibility and color stability to each job.



#### Trim Black

##### The Industry Standard

An acrylic coating formulated to match the OEM finish on automotive trim components. For use on plastic, aluminum, steel, stainless steel and chrome.

- Excellent adhesion and durability
- No primer required
- Matches OEM appearance
- Retains flexibility
- Great coverage
- Professional results
- Aerosol is shop floor compliant (NESHAP)



39141 | Gallon  
39143 | 20 oz. Aerosol  
39144 | Quart

#### Trim Black Euro Jet

##### The Next Generation

##### New Product

An OEM matched coating for automotive trim components. For use on plastic, aluminum, steel, stainless steel and chrome.

- Deeper jet black
- Restores OEM appearance
- Ideal fan pattern
- Fast hiding
- Excellent adhesion
- Professional durability
- No primer necessary
- Remains flexible
- Aerosols are shop floor compliant (NESHAP)



41013 | Matte | 16 oz. Aerosol  
41023 | Satin | 16 oz. Aerosol  
41024 | Satin | Quart  
41033 | Gloss | 16 oz. Aerosol

#### Low VOC Trim Black

##### The Industry Standard

##### 2.8 VOC Compliant

An acrylic coating formulated to match the OEM finish on automotive trim components. For use on plastic, aluminum, steel, stainless steel and chrome.

- Excellent adhesion and durability
- No primer required
- Matches OEM appearance
- Retains flexibility
- Great coverage
- Professional results



39141-LV | Gallon  
39144-LV | Quart

#### Trim Black Gloss Black

##### The Industry Standard

An acrylic coating formulated to match the OEM finish on automotive trim components. For use on plastic, aluminum, steel, stainless steel and chrome.

- Excellent adhesion and durability
- No primer required
- Matches OEM appearance
- Retains flexibility
- Great coverage
- Professional results
- Aerosol is shop floor compliant (NESHAP)



39063 | 16 oz. Aerosol  
39068 | Pint

#### Trim Black Charcoal Metallic

##### The Industry Standard

An acrylic coating formulated to match the OEM finish on automotive trim components. For use on plastic, aluminum, steel, stainless steel and chrome.

- Excellent adhesion and durability
- No primer required
- Matches OEM appearance
- Retains flexibility
- Great coverage
- Professional results
- Shop floor compliant (NESHAP)



39033 | 16 oz. Aerosol





# TRIM BLACK

## THE INDUSTRY STANDARD'S NEXT GENERATION

The next generation of industry leading Trim Black paint is here. Available in aerosols and quarts, Trim Black Euro Jet boasts deeper black color and exceptional coverage. Choose a matte, satin, or gloss finish to professionally match black OEM trim components. Learn more at [semproducts.com/euro-jet](http://semproducts.com/euro-jet)

41023 EURO JET SATIN (16 OZ. AEROSOL)  
41024 EURO JET SATIN (QUART)

41013 EURO JET MATTE  
(16 OZ. AEROSOL)

41033 EURO JET GLOSS  
(16 OZ. AEROSOL)



## FLEXIBLE COATINGS

Refinishing or restoring leather, vinyl and plastic is at the core of SEM. These time-tested permanently flexible and fade resistant coatings continue to lead the automotive, aerospace and marine markets.



### Classic Coat™

A line of OEM matched aerosols for renewing or restoring leather and vinyl.

- Excellent for vinyl and leather
- Superior adhesion, flexibility and hiding
- Will not crack
- Quick drying
- Simple to use
- Shop floor compliant (NESHAP)



16 oz. Aerosol

35 Colors

- 17013 | Midnight Black
- 17023 | Lt Graphite
- 17033 | Lt Parchment
- 17043 | Med Graphite
- 17053 | Med Parchment
- 17063 | Med Prairie Tan
- 17073 | Med Dk Graphite
- 17083 | Dk Graphite
- 17093 | Black

- 17103 | Dk Gray
- 17113 | Graphite
- 17123 | Lt Gray
- 17133 | Lt Neutral
- 17143 | Lt Oak
- 17163 | Med Dk Pewter
- 17173 | Med Gray
- 17183 | Med Neutral
- 17203 | Shale

- 17213 | Very Dk Gray
- 17223 | Very Dk Pewter
- 17243 | Taupe
- 17263 | Classy Gray
- 17293 | Ivory
- 17313 | Tan
- 17323 | Creamy Ivory
- 17353 | Silver Gray
- 17363 | Lt Graystone

- 17373 | Dk Slate Gray
- 17383 | Med Lt Stone
- 17393 | Lt Stone
- 17403 | Camel
- 17413 | Lt Cashmere
- 17423 | Med Cashmere
- 17433 | Very Dk Cashmere
- 17503 | Limo Flat Black

### Texture Coating

A unique blend of flexible materials for restoring the textured finish on bumpers, dashes, fiberglass tops and other plastic parts prior to painting.

- Duplicates original textures
- Ready to spray
- Quick drying
- Top coat with most refinish materials
- Aerosol is shop floor compliant (NESHAP)



- 39853 | 16 oz. Aerosol
- 39854 | Quart

### Super SEM Flex

A paint additive that adds flexibility to urethanes, enamels and lacquers. Perfect for refinishing flexible substrates such as bumpers, vinyl convertible tops and flexible plastics.

- Use with most paint systems
- Adds chip resistance
- Improves gloss
- Ideal with **Color Coat™** for vinyl convertible tops



39728 | Pint

### Leather and Vinyl Repair Compound

A filler to repair small cuts and abrasions on flexible interior substrates.

38422 | 3 oz. Tube



### Interior Graining Pads

Used to duplicate interior grains when using repair compounds.

70022 | 6 Pack



## Sure-Coat™ Mixing System

### VOC Compliant

A waterborne coating system that provides outstanding flexibility and adhesion for refinishing most leather, vinyl, and plastic.

- Superior resins provide great adhesion and durability
- Retains flexibility, will not soften or crack
- Maintains texture of substrate
- 1000s of formulas including many OEM matched colors
- Easy brush or spray application
- Quick drying



14 Colors

**Sure-Coat Mixing System** includes 9 toners, 3 clears, a **Fleet and Foreign Color Selector**, pint labels and **Dauber Bottles**.

Pints

16749 | Pint Mixing System

- 16018 | Black\*
- 16088 | Silver\*
- 16508 | Red Oxide\*
- 16518 | Indo Yellow\*
- 16528 | Quindo Red\*
- 16538 | Thalo Blue\*
- 16548 | White\*
- 16568 | Thalo Green\*
- 16578 | Magenta
- 16588 | Bright Red
- 16598 | Yellow Oxide\*
- 16708 | High Gloss Clear\*
- 16718 | Satin Gloss Clear\*
- 16728 | Low Luster Clear\*

\* Part of the mixing system

Half Gallons

16739 | Half Gallon Mixing System

- 16015 | Black\*
- 16085 | Silver\*
- 16505 | Red Oxide\*
- 16515 | Indo Yellow\*
- 16525 | Quindo Red\*
- 16535 | Thalo Blue\*
- 16545 | White\*
- 16565 | Thalo Green\*
- 16585 | Bright Red
- 16595 | Yellow Oxide\*
- 16705 | High Gloss Clear\*
- 16715 | Satin Gloss Clear\*
- 16725 | Low Luster Clear\*

\* Part of the mixing system

## Sure-Coat Flattener

An additive to decrease the gloss of **Sure-Coat** colors.

16808 | Pint



## Sure-Coat Cross Linker

An additive for **Sure-Coat** that increases its durability from the effects of most cleaning chemicals.

16004 | 4 oz.



## Sure-Coat Dauber Bottle

A unique applicator with a dense sponge dauber allowing product to be applied directly from bottle.

70400 | 4 oz. Dauber



## Sure-Coat Reducer

A blend of water-based solvents to reduce **Sure-Coat** when necessary.

16754 | Quart



## Poly Brush Applicator

A dense, poly foam applicator for use in applying **Sure-Coat**.

05500 | Brush



## Fleet and Foreign Color Selector

320 solid and metallic color deck to help users select the proper color of **Sure-Coat** and **Color Coat™**.

70034 | Deck



## Flexible Coating Selection

Choosing the proper flexible coating for your substrate is one of the most important parts of repairing your interior and exterior plastic, vinyl, leather, carpet and velour. With the correct coating, you're guaranteed a long lasting, quality finish.

Flexible Coating	Plastic	Vinyl	Leather	Carpet	Velour
Sure-Coat™	✓	✓	✓		
Color Coat™	✓	✓		✓	✓
Classic Coat™		✓	✓		
Marine Vinyl Coat™	✓	✓			
Marine Engine Paint™	✓				
Aerospace Sure-Coat™	✓	✓	✓		

BEFORE



AFTER



### Color Coat™

A specialty, elastomeric coating formulated to restore or change the color of most vinyl surfaces, flexible and rigid plastics, carpet and velour. **Color Coat** is not a dye, but a fade resistant flexible and permanent coating.

- Refinish vehicle interiors and motorcycle seats
- Enhance automotive carpet and velour
- Superior adhesion, flexibility, and hiding
- Will not crack
- Quick drying and simple to use
- Ready to spray quarts and gallons
- 50 popular aerosol colors
- Mixing system available for endless colors

16 oz. Aerosols

#### 50 Colors And 3 Clears

13003		High Gloss Clear
13013		Satin Gloss Clear
13023		Low Luster Clear
15003		Phantom White
15013		Landau Black
15023		Cordovan Brown
15033		Saddle Tan
15043		Shadow Blue
15053		Granite
15063		Burgundy
15083		Silver
15093		Lt. Buckskin
15103		Super White
15113		Firethorn Red
15123		Santa Fe
15143		Sandstone
15163		Presidio
15173		Camel
15183		Warm Gray
15213		Bluemist
15223		Castella
15233		Gloss Black
15243		Satin Black
15253		Titanium Metallic
15273		Napa Red
15283		Pescadero Sand
15303		Graphite
15313		White
15323		Palomino
15353		Lt. Titanium
15363		Portola Red
15373		Flame Red
15393		Med Gray
15413		Thomas Bus Gray
15453		Gloss White
15483		Bluebird Brown
15603		Sailcloth White

15643		Pacific Blue
15713		Ladera
15723		Monterey
15753		Lt. Oak
15763		Storm Gray

Aerosols are shop floor compliant (NESHAP)



### Color Coat Aerosol Blanks

Fill any custom color in an aerosol can.

15593		Universal Color Coat
61983		Custom Fill™ Color Coat

See page 32-33 for complete details.

### Color Coat Mixing System

The **Cone Top Mixing System** is for the jobber, shop or mobile technician.

The **Quart Mixing System** is perfect for the jobber or shop to start mixing **Color Coat**.

The **Gallon Mixing System** is for the jobber or shop that mixes **Color Coat** regularly.

- 9 toners and 3 clears
- Convenient pourable containers
- Includes intermix labels and sales aids
- Comes with 5 years of color chips and a **Fleet and Foreign Color Selector**
- 1000s of OEM matched formulas

Gallons

#### 27969 | Gallon Mixing System

13001		High Gloss Clear*
13011		Satin Gloss Clear*
13021		Low Luster Clear*
15011		Landau Black*
15081		Silver*
15091		Lt. Buckskin
15101		Super White
15311		White
15501		Red Oxide*
15511		Fast Yellow*
15521		Fast Red*
15531		Fast Blue*
15541		Tinting White*
15561		Fast Green*
15581		Bright Red
15591		Yellow Oxide*

Cone top Quarts

#### 27979 | Cone top Quart Mixing System

13006		High Gloss Clear*
13016		Satin Gloss Clear*
13026		Low Luster Clear*
15016		Landau Black*
15086		Silver*
15506		Red Oxide*
15516		Fast Yellow*
15526		Fast Red*
15536		Fast Blue*
15546		Tinting White*
15566		Fast Green*
15576		Magenta
15586		Bright Red
15596		Yellow Oxide*

\* Part of the mixing system

Quarts

#### 27989 | Quart Mixing System

13004		High Gloss Clear*
13014		Satin Gloss Clear*
13024		Low Luster Clear*
15014		Landau Black*
15084		Silver*
15504		Red Oxide*
15514		Fast Yellow*
15524		Fast Red*
15534		Fast Blue*
15544		Tinting White*
15564		Fast Green*
15584		Bright Red
15594		Yellow Oxide*



### Fleet and Foreign Color Selector

320 solid and metallic color deck to help users select the proper color of **Sure-Coat** and **Color Coat**.

70034 | 1 Deck



### Color Coat Flattener

An additive that lowers gloss and adds versatility when custom matching **Color Coat** intermix formulas.

13038 | Pint



**FILL ANY COLOR COAT FORMULA IN AN AEROSOL**



### Tac Free

An aerosol elastomeric satin top coat used to eliminate plasticizer migration on coated surfaces.

- Eliminates tackiness on refinished vinyl
- Wet on wet application saves time
- Protective coating
- Resistant to alcohol based cleaners
- Shop floor compliant (NESHAP)



39643 | 16 oz. Aerosol

## AEROSPACE

Restore aircraft interior leather, vinyl and plastics. SEM offers coatings that meet FAA flammability guidelines, allowing you to repair your interior at a fraction of the cost of replacement.



### Aerospace Plastic & Leather Prep

A mild solvent blend that properly cleans plastic and leather prior to refinishing.

A38353 | 16 oz. Aerosol



- Removes mold release agents, fingerprints and grease
- Promotes adhesion of top coat
- Will not soften or distort plastic parts
- Easy to use

### Aerospace SEM Soap

A mild abrasive cleaner used as the first step in refinishing flexible substrates.

A39362 | 16 oz. Tube



- Gravitates into surface and floats contaminants for easy removal
- Mild abrasive helps with adhesion
- Foaming action removes body oils and other water soluble contaminants

### Aerospace Sure-Coat™ Mixing System

VOC Compliant

A waterborne coating system than offers excellent flexibility and outstanding adhesion for a variety of aerospace applications.

- Excellent for leather, vinyl and plastic
- Meets FAR's 23.853, 25.853(a) and (c), 27.853 and 29.853
- Can be brushed or sprayed
- Mixing system = endless colors
- Superior resins provide great adhesion, flexibility and durability
- Easy to use
- Quick drying



14 Colors

**Aerospace Sure-Coat Mixing System** includes 9 toners, 3 clears, and a **Aerospace Fleet and Foreign Color Selector**, pint labels and **Dauber Bottles**.

Pints

A16749 | Pint Mixing System

- A16018 | Black\*
- A16088 | Silver\*
- A16508 | Red Oxide\*
- A16518 | Indo Yellow\*
- A16528 | Quindo Red\*
- A16538 | Thalo Blue\*
- A16548 | White\*
- A16568 | Thalo Green\*
- A16578 | Magenta
- A16588 | Bright Red
- A16598 | Yellow Oxide\*
- A16708 | High Gloss Clear\*
- A16718 | Satin Gloss Clear\*
- A16728 | Low Luster Clear\*

\* Part of the mixing system

Half Gallons

A16739 | Half Gallon Mixing System

- A16015 | Black\*
- A16085 | Silver\*
- A16505 | Red Oxide\*
- A16515 | Indo Yellow\*
- A16525 | Quindo Red\*
- A16535 | Thalo Blue\*
- A16545 | White\*
- A16565 | Thalo Green\*
- A16585 | Bright Red
- A16595 | Yellow Oxide\*
- A16705 | High Gloss Clear\*
- A16715 | Satin Gloss Clear\*
- A16725 | Low Luster Clear\*

\* Part of the mixing system

### Sure-Coat Flattener

An additive to decrease the gloss of Sure-Coat colors.

A16808 | Pint



### Sure-Coat Dauber Bottle

A unique applicator with a dense sponge dauber allowing product to be applied directly from bottle.

70400 | 4 oz. Dauber



### Poly Brush Applicator

A poly foam applicator for use in applying Sure-Coat.

05500 | Brush



### Aerospace Color Selector

A color deck to help users select the proper color of Aerospace Sure-Coat.

A70034 | Deck



## MARINE

Keep your watercraft looking new, season after season, by restoring the original color to your vinyl seats and plastic components. Save hundreds, if not thousands of dollars, over replacement or recovering.



### Engine Paint

An elastomeric coating formulated to restore the color of plastic marine engine cowlings and other painted metal parts on the stern drive and lower unit.

- Excellent for fiberglass, plastic and precoated metal
- Elastomeric coating – will not crack
- Superior hiding and gloss
- Smooth, consistent finish
- Matches OEM finish
- Excellent corrosion control
- Shop floor compliant (NESHAP)



16 oz. Aerosol

- M25503 | Evinrude White
- M25513 | Mercury Phantom Black

### Vinyl Coat™

A line of elastomeric aerosol coatings to match, restore or change the color of most marine vinyl and plastic surfaces.

16 oz. Aerosol

25 Colors

- Covers stains, fading and prepped mildew
- Superior adhesion
- Outstanding UV protection
- Stays flexible, will not crack
- Excellent hiding
- Quick drying
- Shop floor compliant (NESHAP)



- M25003 | Ultra Purple
- M25013 | Ultra Turquoise
- M25023 | Ranger Orchid Green
- M25033 | Ultra Blue
- M25043 | Ranger Admiral Blue
- M25053 | Ranger Black
- M25063 | Ranger White
- M25073 | Ranger Off-White
- M25083 | Carver White

- M25093 | Sea Ray Mystic White
- M25103 | Sea Ray Alabaster
- M25113 | Sea Ray Champagne
- M25123 | Carver Dade Bisque
- M25133 | Carver Light Tan
- M25143 | Chaparral Beige/Platinum
- M25153 | Stingray Taupe
- M25163 | Ranger Beige
- M25173 | Ranger Charcoal

- M25183 | Ranger Gunmetal Grey
- M25193 | Light Grey
- M25203 | Formula Boats Grey
- M25213 | Carver Coco
- M25223 | Stingray Yellow
- M25233 | Formula Boats Red
- M25243 | Sterling Burgundy

## REFINISH & SAVE

Refinishing with  
**Vinyl Coat™**

**VS**

Replacing  
the seat

\$ **31**<sup>38</sup>

\$ **498**

Watch the video to see how this old seat was made new using **Vinyl Coat**.

**BEFORE**



**AFTER**



# SEEING IS BELIEVING



[semproducts.com/boatseats](http://semproducts.com/boatseats)



THE INDUSTRY LEADING  
**HOT ROD BLACK**  
MAKES ITS MARK  
ON NASCAR

Hot Rod Black's matte finish  
looks incredible  
on the #51 car  
driven by Justin Allgaier.



Made in the USA

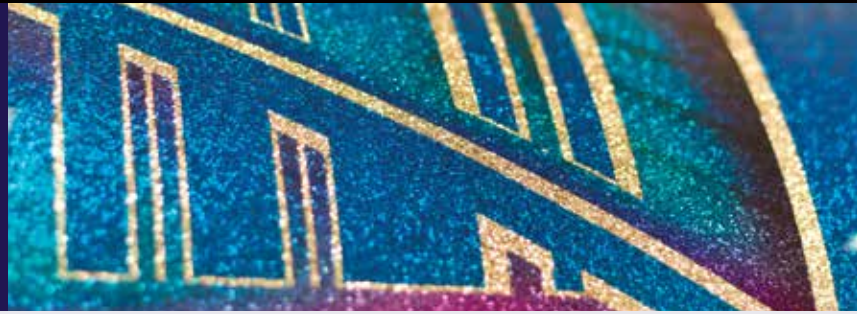


[semproducts.com](http://semproducts.com)



### CUSTOM FINISH

Whether your style is bright, chromatic colors or laid-back subtle nuances, SEM offers a product that's right for you. From basecoats, candies, fluorescents and effect pigments to the best selling, high quality line of matte finishes in the industry, SEM has your custom paint needs covered.



#### Hot Rod Black

The industry leading matte, two-component, single stage black for low gloss accent stripes, hoods or entire vehicles.

- Durable and mar resistant
- Excellent resistance to chalking and fading
- Retains color
- Smooth and uniform finish
- National Rule VOC compliant



HR010 | Kit

KIT CONTAINS:

- 1 – HR014 | Black | Quart
- 1 – HRC06 | Catalyst | Half Pint
- 1 – HRR06 | Reducer | Half Pint

#### Low VOC Hot Rod Colors

##### 2.8 VOC Compliant

The leading matte finish, two-component, single stage topcoat system for low gloss accent stripes, hoods, or entire vehicles.

- Durable and mar resistant
- Excellent resistance to chalking and fading
- Retains color
- Smooth and uniform buff-free finish
- 2.8 VOC compliant
- Black, silver, smoke & white
- Intermix for one-off colors



HR010-LV | Black | Kit

HR020-LV | Silver | Kit

HR030-LV | Smoke | Kit

HR040-LV | White | Kit

KIT CONTAINS:

- 1 – LOW VOC COLOR | Quart
- 1 – HRC06-LV | Catalyst | Half Pint
- 1 – HRR06-LV | Reducer | Half Pint

#### Hot Rod Clear

##### 2.1 VOC Compliant

Provides the ultimate custom low gloss look on any color when painting accent stripes, hoods or entire vehicles.

- Durable, two-component, matte finish
- Smooth and uniform appearance
- 2.1 VOC compliant
- Convenient kit format



HRC40 | Kit

KIT CONTAINS:

- 1 – HRC04 | Clear | Quart
- 1 – HRC06-LV | Catalyst | Half Pint
- 1 – HRR06-LV | Reducer | Half Pint

#### Base Colors

Fast covering clean colors that provide maximum color effect for custom paint jobs.

- Superior pigmentation
- Ideal atomization
- Smooth and uniform finish
- Excellent adhesion
- Easy to apply with no recoat issues
- Accepts isocyanate hardener in multi-layer jobs



Quart

02014 | Gold

02024 | Silver

02044 | Bright White

02054 | Jet Black

02064 | Titanium

02094 | Light Gold

02114 | Bright Yellow

02154 | Red

#### Mix Clear

A one-component colorless coating used as a carrier for custom finish concentrates and effect pigments.

- Excellent color holdout
- Can be used as a mid-coat clear to protect artwork
- Transparent for vivid colors
- Minimizes tape tracking
- Fast drying
- Easy to use



MC011 | Gallon

MC014 | Quart



### Candy Concentrates

A vibrant line of transparent pigments that add spectacular color to custom paint jobs.

- Outstanding depth and clarity
- Brilliant, clean colors
- Easy to apply
- Combine with effect pigments for the ultimate custom look
- Compatible with multiple paint technologies



- 03016 | Winefire | Half Pint
- 03026 | Sun Dance | Half Pint
- 03046 | Aqua Blue | Half Pint
- 03056 | Royal Blue | Half Pint
- 03086 | Mandarin | Half Pint
- 03096 | Mint Green | Half Pint
- 03106 | Passion Purple | Half Pint
- 03116 | Candy Apple Red | Half Pint
- 03126 | California Gold | Half Pint
- 03156 | Magenta | Half Pint

### Fluorescent Concentrates

A line of intense, eye-catching colors for creating custom graphics.

- Extra bright colors
- High visual impact
- Compatible with multiple paint technologies



- Pint
- 03208 | Fireball
  - 03218 | Caliente
  - 03228 | Stop Light
  - 03238 | Maui Blue
  - 03248 | Mean Green
  - 03258 | Hotter Than Pink
  - 03268 | Marvey Magenta
  - 03278 | Wild Chartreuse
  - 03288 | Sun Spot

### Flakes

Precision cut resin coated chips for adding intense sparkle to custom paint jobs.

- Brilliant, jewel-like colors
- Provides extreme effect
- Fade and solvent resistant
- Easy to apply



- 4 oz.
- 06014 | Mini Gold
  - 06024 | Mini Silver
  - 06034 | Blue
  - 06044 | Gold
  - 06054 | Red
  - 06064 | Green
  - 06124 | Solar Flare
  - 06144 | Silver Rainbow
  - 06154 | Silver

### Lightning FX

Vibrant glass pearl pigments that provide extra brilliance and sparkle to custom paint jobs.

- Add to color or clear
- Highly reflective
- Adds intense sparkle in sunshine



- 2 oz.
- 33012 | White Lightning
  - 33022 | Sun Gold
  - 33032 | Hurricane Red
  - 33042 | Ultra Violet
  - 33052 | Thunder Blue
  - 33062 | Electro Green

### Paste Pearls

Concentrated effect pigments that add a mild frosted sparkle effect to custom paint jobs.

- Concentrated for easy mixing
- Highly reflective pigments
- Easy to create one-off colors



- 2 oz.
- 35202 | Platinum
  - 35212 | Red 2-Tone
  - 35222 | Gold 2-Tone
  - 35232 | Blue 2-Tone
  - 35242 | Green 2-Tone
  - 35252 | Violet 2-Tone
  - 35262 | Orange 2-Tone
  - 35272 | Aztec Gold



### AEROSOL FILLING

Increase throughput with shop floor compliant aerosols. Fill one custom aerosol or hundreds with our quick, clean and easy to use filling equipment and aerosol blanks. Limitless color combinations for solvent and waterborne paint systems increase your revenue.



#### Custom Fill™ Aerosol Blank

Can be filled with a variety of automotive paints using a **Custom Fill Machine**. Custom aerosols are compliant for use by professional shops outside of the booth and give DIY customers professional results.

- No clean up
- Comfort tip eases finger fatigue
- Holds pressure throughout the can
- Shop floor compliant (NESHAP)
- Quick and easy to fill
- Professional spray pattern



61993 | 16 oz. Aerosol

#### Custom Fill Waterborne Aerosol Blank

Can be filled with **Sure-Coat™** and automotive waterborne basecoat for convenient high quality repairs.

- No clean up
- Comfort tip eases finger fatigue
- Holds pressure throughout the can
- Shop floor compliant (NESHAP)
- Quick and easy to fill
- Professional spray pattern



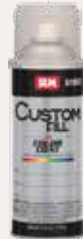
62003 | 16 oz. Aerosol

#### Custom Fill Color Coat™ Aerosol Blank

##### New Product

Designed to be filled with **Color Coat** using a **Custom Fill** machine. Custom aerosols provide unlimited colors for refinishing vinyl, plastic, carpet and velour.

- No clean up
- Comfort tip eases finger fatigue
- Holds pressure throughout the can
- Shop floor compliant (NESHAP)
- Quick and easy to fill
- Professional spray pattern



61983 | 16 oz. Aerosol

#### Custom Fill Pneumatic Machine

A pneumatic filler to make custom aerosols.

- No clean up
- Fills solvent and waterborne blanks
- Simple pneumatic operation
- Quickly fill 1 can or many



70701 | Pneumatic Machine

Width: 5.25"

Height: 15"

Accessories:

70704 | Wall Bracket

70706 | Cylinder

#### Custom Fill Manual Machine

A hand operated aerosol filler to fill custom aerosols.

- No clean up
- Fills solvent and waterborne blanks
- Simple crank operation
- Perfect for lower volume filling



70801 | Manual Machine

Width: 5.25"

Height: 22" including handle

### Multi-Coat™ Aerosol Blank

An aerosol blank that can be filled with enamels, urethanes, and other paints.

- Create customer specific aerosols
- Use with Omni or Fillon machines
- Ideal for industrial applications
- Economical
- Shop floor compliant (NESHAP)



61003 | 16 oz. Aerosol

### Universal Color Coat™ Aerosol Blank

A blank aerosol that can be filled with custom **Color Coat™** colors.

- Ideal solvent blend for **Color Coat**
- Use with Omni or Fillon machines
- Professional spray pattern
- Shop floor compliant (NESHAP)



15993 | 16 oz. Aerosol

## ADHESION PROMOTERS

Eliminate costly rework from paint not sticking to plastic or other difficult substrates. Simple to use, SEM adhesion promoters make painting substrates quick and easy.



### XXX Adhesion Promoter

Increases adhesion of top coat materials to surfaces such as plastics, aluminum, steel, glass, chrome, and previously painted surfaces.

- Superior bonding properties
- Topcoat with most refinish products
- Excellent on olefin based plastics
- Easy to apply
- Aerosols is shop floor compliant (NESHAP)



77721 | Gallon  
77723 | 16 oz. Aerosol  
77724 | Quart

### Plastic Adhesion Promoter

Seals substrates and increases adhesion of top coat materials to a wide variety of raw plastics.

- Superior bonding properties
- Topcoat with most refinish products
- Excellent on olefin based plastics
- Easy to apply
- Aerosols is shop floor compliant (NESHAP)



39861 | Gallon  
39863 | 20 oz. Aerosol  
39864 | Quart

### Sand Free Adhesion Promoter

A unique wet-on-wet adhesion promoter for certain plastics.

- Works on ABS, PVC and similar plastics
- Wet-on-wet application melts color into substrate
- Perfect for interior plastic parts
- Easy to use
- Aerosols is shop floor compliant (NESHAP)



38363 | 16 oz. Aerosol  
38364 | Quart

## GENERAL PURPOSE AEROSOLS

### MultiMax™

Durable and economical aerosols for automotive, industrial and household use.

- Outstanding coverage
- Excellent filling properties
- Durable, fast drying finish
- Great adhesion
- Professional finish
- Shop floor compliant (NESHAP)



16 oz. Aerosol

- 61013 | Flat Black
- 61023 | Semi-Gloss Black
- 61033 | Gloss Black
- 61043 | Aluminum
- 61073 | Clear
- 61083 | Red Oxide Primer
- 61093 | Gloss White
- 61103 | Gray Primer
- 61113 | Chasis Gray

## PAINT STRIPPERS

### XXX Bumper Stripper

An aerosol material designed to safely remove refinish materials from flexible parts.

- Won't swell or attack substrate
- Safe for most bumpers
- Non-sag formula



77713 | 16 oz. Aerosol

### Urethane Bumper Stripper

Safely removes refinish materials from flexible parts.

- Won't swell or attack substrate
- Safe for most bumpers including urethane pieces
- Non-sag formula



39913 | 20 oz. Aerosol

## UV CURED CLEAR

### Solaray™ UV Clearcoat

A UV cross-linked coating for restoring headlights and refinishing wheels and accessories.

- Long lasting OEM material
- Restores clarity, appearance and light output of headlight lenses
- Cures fast to a hard high gloss finish
- Superior durability
- Shop floor compliant (NESHAP)



21013 | 12 oz. Aerosol

### Solaray UV Curing Lamp

A UV lamp used to cure Solaray UV Clearcoat quickly and completely.

- Cures Solaray in 2 – 3 minutes
- Good curing footprint
- Hold by hand or bolt to a stand



21109 | Lamp

## UNDERCOATINGS

SEM undercoatings eliminate the headaches caused by the poor performance of low quality products. Our rubberized products offer industry leading color and texture without bleed through. Our asphalt products give fantastic coverage and dry times at an economic price.



### Rubberized Undercoating

A premium, single component, paintable, textured coating for sound dampening, chip resistance, rust protection and corrosion protection.

- Uniform final appearance
- Quality asphalt free formula
- Paintable without bleed through
- Sound-dampening properties
- Includes straw for tight spots
- Fast-drying
- Chip and corrosion resistant



39513 | White (EU Only) | 24 oz. Aerosol  
39523 | Black | 24 oz. Aerosol

### Low VOC Rubberized Undercoating

#### VOC Compliant

A premium, single component, paintable, textured coating for sound dampening, chip resistance, rust protection and corrosion protection.

- Uniform final appearance
- Quality asphalt free formula
- Paintable without bleed through
- Sound-dampening properties
- Aerosol includes straw for tight spots
- Fast-drying
- Chip and corrosion resistant



40523 | Black | 24 oz. Aerosol  
40524 | Black | Quart

Apply with the **Economy Coating Gun** or **Premium Undercoat Gun** on page 42.

### Undercoating

A non-paintable, asphalt based, aerosol coating for corrosion protection, chip resistance and sound deadening on automotive frames, wheel wells and undercarriage areas.

- Uniform appearance
- Excellent adhesion
- Economical



39463 | Black | 24 oz. Aerosol

### Low VOC Undercoating

#### VOC Compliant

A non-paintable, asphalt based, aerosol coating for corrosion protection, chip resistance and sound deadening on automotive frames, wheel wells and undercarriage areas.

- Uniform appearance
- Excellent adhesion
- Economical



40463 | Black | 24 oz. Aerosol

Apply with the **Economy Coating Gun** or **Premium Undercoat Gun** on page 42.

### Dual-Mix™ Sound & Seal Sprayable Coating

#### Dual-Mix Forever Warranty

40977 | 7 oz. 2K Cartridge

See page 10 for complete details.

# BE THE FIRST TO KNOW

## LEARN ABOUT NEW PRODUCTS, PROMOTIONS, TRAINING AND SOPs

**SEMPRODUCTS.COM/FIRST**  
TO LEARN MORE & SIGN UP TODAY

### TRUCKBED LINERS

SEM offers three sprayable liners with various advantages in protection and cosmetic appearance. Available in black and tintable versions, SEM liners will not chalk, fade or peel after proper application.



#### Pro-Tex™ Truckbed Liner

##### Lifetime Warranty

A professional, two-component, urethane liner system that provides a hard, durable finish and superior protection to truckbeds and equipment.

- Tough, durable and non-corrosive
- Air and water tight
- Tintable version to match OEM colors
- Outstanding chemical resistance
- Bonds to most surfaces
- Resists fading
- Excellent sound dampening
- No maintenance

Apply with the **Pro-Tex Truckbed Liner Gun**, or **Premium Undercoat Gun** on page 38.



40640 | Black | Kit

##### KIT CONTAINS:

- 1 – 40641 | Black | Gallon
- 2 – 40674 | Catalyst | Quart
- 2 – 71004 | Plastic Schutz Bottle
- 2 – Mixing Cups

##### SOLD SEPARATELY:

- 40645 | Black | 5 Gallon
- 40671 | Catalyst | Gallon



40660 | Tintable | Kit

##### KIT CONTAINS:

- 1 – 40661 | Tintable | Gallon
- 2 – 40674 | Catalyst | Quart
- 2 – 71004 | Plastic Schutz Bottle
- 2 – Mixing Cups

##### SOLD SEPARATELY:

- 40665 | Tintable | 5 Gallon
- 40671 | Catalyst | Gallon

#### Pro-Tex™ Extender

An additive to lengthen the pot life of **Pro-Tex Truckbed Liner** and **Pro-Tex 2K Chip Guard** kit.

40688 | Pint



#### Plastic Schutz Bottle

A black HDPE plastic bottle for applying undercoatings and liner systems.

71004 | 1 each

See page 42 for attachable applicator guns.

#### Professional Truckbed Liner

A two component, urethane, textured coating that provides superior adhesion, film build and flexibility to truckbeds and restoration projects.

Apply with the **Premium Undercoat Gun** on page 42.

- Durable, slip resistant, non-corrosive coating
- Outstanding adhesion and chemical resistance
- Will not fade
- Bonds to most surfaces
- Tintable version to match OEM colors
- Sound dampening properties
- Air and water tight



39630 | Black | Kit  
39650 | Tintable | Kit

##### KIT CONTAINS:

- 1 – 39631 | Black | Gallon OR
- 1 – 39651 | Tintable | Gallon AND
- 1 – 39634 | Catalyst | Quart
- 2 – 71004 | Plastic Schutz Bottle
- 1 – Mixing Cup



WATCH OUR VIDEO AND LEARN HOW TO QUICKLY AND EASILY TRANSFORM YOUR TRUCKBED.

[semproducts.com/rock-it-spotlight](http://semproducts.com/rock-it-spotlight)

## Rock-It Liner™

### Improved Formula

A high quality, urethane, textured coating that provides a durable protective finish for truckbeds and restoration projects.

- Durable coating maintains flexibility
- Excellent sound dampening
- Easy to apply with standard undercoating gun
- Outstanding adhesion to most surfaces
- Tintable version to match OEM colors
- Chemical resistant
- Fade resistant
- Free applicator gun included in kits

42250 | Black | Kit

KIT CONTAINS:

- 4 – 42254 | Black | Quart
- 1 – 42244 | Catalyst | Quart
- 1 – 71102 | Rock-It Liner Gun
- 1 – Mixing Cup

### New Products

SOLD SEPARATELY:

- 42254 | Black | Quart
- 42246 | Catalyst | Half Pint

**IMPROVED:**  
 • DURABILITY  
 • GLOSS  
 • TEXTURE

42260 | Tintable | Kit

KIT CONTAINS:

- 4 – 42264 | Tintable | Quart
- 1 – 42244 | Catalyst | Quart
- 1 – 71102 | Rock-It Liner Gun
- 1 – Mixing Cup

### New Products

SOLD SEPARATELY:

- 42264 | Tintable | Quart
- 42246 | Catalyst | Half Pint



# ROCK-IT LINER™



BEFORE



AFTER



## STEP 1: CLEAN

Pressure wash and clean with **SEM Solve** or **Zero VOC Surface Cleaner**.



## STEP 2: PREP

Sand with 180 – 220 grit paper or a bed brush and then prime bare metal or aluminum with **World Class™ DTM Primer**.



## STEP 3: APPLICATION

Mix and spray 2 – 3 light coats of **Rock-It Liner**. The first coat should not offer full coverage. Full coverage is achieved in subsequent coats.

### CHIP GUARDS

SEM has the top products for restoring OEM chip resistance and corrosion protection to lower body panels. From a mild texture to the thicker textured coatings on trucks, SEM has a chip guard that is right for the job.



#### Pro-Tex™ 2K Chip Guard

A two-component, urethane, textured coating for the ultimate protection of lower panels prone to chipping and corrosion.

- Tintable and paintable
- Duplicate all OEM textures
- Topcoat with solvent or waterborne systems
- Best in class protection
- Excellent gloss retention
- Tintable to match OEM colors
- Coarse to heavy texture



40820 | Kit

KIT CONTAINS:

- 1 – 40824 | Chip Guard | Quart
- 2 – 40836 | Catalyst | Half Pint

#### Heavy Texture Chip Guard

An aerosol coating that matches medium to coarse OEM textures and protects lower panels from impact, chipping and abrasion.

- Excellent chip and impact protection
- Duplicate a variety of factory textures
- Simple aerosol application
- Medium to coarse texture
- Paintable in 45 minutes



39793 | Opaque | 20 oz. Aerosol

#### Satin Black Chip Guard

A durable, acrylic coating that matches light to medium OEM textures and protects lower panels from impact, chipping, and abrasion.

- Black in color
- Excellent chip and impact protection
- Duplicate a variety of factory textures
- Available in aerosol and a ready to spray quart
- Fine to medium texture



39813 | 20 oz. Aerosol

39814 | Quart

#### Clear Chip Guard

A durable, acrylic coating that matches light to medium OEM textures and protects lower panels from impact, chipping, and abrasion.

- Excellent chip and impact protection
- Duplicate a variety of factory textures
- Available in aerosol and a ready to spray quart
- Fine to Medium texture



39803 | 20 oz. Aerosol

39804 | Quart

### COATING EQUIPMENT

SEM has the top products for restoring OEM appearance and protection.

#### Pro-Tex™ Truckbed Liner Gun

A siphon feed spray gun used to apply Pro-Tex liners.

- 0.5" pick up tube required for Pro-Tex
- Adjustable pattern

71001 | Applicator

#### Premium Undercoat Gun

A siphon feed heavy plastic applicator for spraying bed liners, undercoatings, and rust proofing.

71109 | Applicator

See page 42 for complete details.

#### Economy Coating Gun

A low cost, cast aluminum siphon gun for spraying bulk undercoatings and chip guards..

71101 | Applicator

See page 42 for complete details.



## RUST PREVENTION

Restoring OEM corrosion protection is critical to a lasting repair. These products provide OEM quality corrosion protection while improving repair process efficiencies.



### Rust Preventer

A semi-transparent black internal panel compound to restore OEM corrosion protection on inner body panels.

- Non-hardening
- Sprayable in 360° pattern
- Superior adhesion
- Fast drying
- Excellent corrosion protection



39573 | 24 oz. Aerosol  
39574 | Quart

### Copperweld™

A weld-through primer for superior corrosion protection between welded substrates.

40783 | 20 oz. Aerosol

See page 18 for complete details.

### Brushable Copperweld™

A brushable weld-through primer for superior corrosion protection between welded substrates.

40786 | 8 oz. can

See page 18 for complete details.

### Weld-Thru Primer

A zinc enriched coating that provides corrosion protection between welded substrates while minimizing distortion and welding splatter.

39783 | 16 oz. Aerosol

See page 18 for complete details.

### Premium Undercoat Gun and Wand

A siphon feed heavy plastic applicator for spraying bed liners, undercoatings, and rust proofing.

71110 | Applicator and 1 Spray Wand

See page 42 for complete details.

## RUST CONVERTERS & SEALERS

Removing rust can damage your substrate. With SEM rust products, stop oxidation and prevent further damage or convert existing rust to a paintable surface. Never let rust stop you from completing your repair.



### Rust-Mort™

An acidic compound that converts existing rust to an insoluble coating prior to applying body filler, primer or top coat.

- Modifies and converts rust
- Creates ideal surface for filler or primer
- Easy to use
- Ready to apply
- Minimal surface preparation
- Must be topcoated



69501 | Gallon  
69504 | Quart  
69508 | Pint

### Rust-Seal™

An acidic compound that transforms rust to form a permanent, protective coating.

- Neutralizes rust
- Leaves a tough protective coating
- May be left exposed or top coated
- Apply with brush or roller
- Can be sanded before application of top coat
- Minimal surface preparation



39304 | Quart  
39308 | Pint

# SEMPRODUCTS.COM EVERYTHING YOU NEED AT YOUR FINGERTIPS

**SEM** Repair & Refinishing Products

Products Brands Markets Training & Resources SEM Blog About Us

**Classic Coat™**

Classic Coat is a line of OEM matched aerosols for renewing or restoring leather and vinyl.

[Tech Data Sheet](#)

Features	Applications	Properties
<ul style="list-style-type: none"> <li>Excellent for vinyl and leather</li> <li>Superior adhesion, flexibility and healing</li> <li>Will not crack</li> <li>Quick drying</li> <li>Simple to use</li> </ul>	<ul style="list-style-type: none"> <li>Vinyl</li> <li>Leather</li> </ul>	<ul style="list-style-type: none"> <li>16 oz. Aerosol</li> <li>35 OEM matched colors</li> <li>Clear: 2-3 light</li> <li>Coverage: 10 sq. ft.</li> </ul>

Type	Description	Download Link
Tech Data Sheet	Technical Data Sheet of all sprays	<a href="#">Download</a>   <a href="#">View</a>
Video Resource	Classic Coat	<a href="#">Watch Video Now</a>
Literature Resource File	Classic Coat Booklet	<a href="#">Download</a>   <a href="#">View</a>
Literature Resource File	Classic Coat Flyer	<a href="#">Download</a>   <a href="#">View</a>
Literature Resource File	Classic Coat™ Color Card	<a href="#">Download</a>   <a href="#">View</a>

Showing 5 of 7 [View All](#)

**Classic Coat™ Search**

Part	Description	Size	Case	SDS
17015	Midnight Black	16 oz. Aerosol	6	<a href="#">View</a>
17023	LT. Graphite	16 oz. Aerosol	6	<a href="#">View</a>
17055	LT. Parchment	16 oz. Aerosol	6	<a href="#">View</a>
17043	Med. Graphite	16 oz. Aerosol	6	<a href="#">View</a>
17053	Med. Parchment	16 oz. Aerosol	6	<a href="#">View</a>

Showing 5 of 35 [View All](#)

**Related Products**

- SEM Soap
- Wax Free
- Zero VOC Surface Cleaner
- Paints & Leather Pro

SEM Catalog Literature Request SEM Training Online SDS/SDS Resources

SEM Products, Inc. 1985 Driveway Dr. Customer Care Tech Support  
© 2015 All Rights Reserved. Rock Hill, SC 29730 800-877-7629 800-481-1122  
www.semproducts.com www.semproducts.com

Find products quickly with the search engine

Training and videos

Tech Data Sheet

Product features, applications, substrates and properties

All related product literature and videos organized in one place

All parts of the product line and Safety Data Sheet (SDS) search engine

Easily navigate to related products



**GO MOBILE AT  
SEMPRODUCTS.COM  
TODAY**

**SIGN UP TODAY AND WE WILL UPDATE YOU ONCE A MONTH**  
**SEMPRODUCTS.COM/FIRST**  
**NEW PRODUCTS | NEW PROCEDURES | PROMOTIONS | TRAINING | SOPS**

## RUST COATINGS

Make difficult refinish projects quick and easy by painting directly to rust and bare steel at the same time. Whether a small job at home or a large piece of industrial equipment, SEM rust products transform old and rusty items.



### Rust-Shield™

#### 2.8 VOC Compliant

A direct to metal coating that isolates and controls oxidation, rust, and corrosion on ferrous metals.

- Paint direct to rust and metal
- Restore road equipment, tractors, and snow plows
- Outstanding coverage and adhesion
- Tough, long lasting finish
- Activator available for extra durability
- Compliant everywhere



### Rust-Shield Hardener and Gloss Enhancer

A catalyst for use with **Rust-Shield**.

- Adds gloss and durability
- Easy 8:1 mixing ratio
- Eliminates recoat headaches
- Aids in curing in cooler conditions

38008 | Pint



Gallons

- 28061 | Gloss Black
- 28081 | Safety Orange
- 28091 | Flat Black
- 28101 | Black
- 28111 | White
- 28121 | Dark Blue
- 28131 | International Harvester Red
- 28141 | Cat Yellow

Gallons

- 28151 | F.M.F. Gray
- 28161 | John Deere Yellow
- 28181 | John Deere Green
- 28191 | Aluminum

Quarts

- 28064 | Gloss Black
- 28094 | Flat Black
- 28104 | Black
- 28114 | White
- 28134 | International Harvester Red
- 28154 | F.M.F. Gray
- 28164 | John Deere Yellow
- 28194 | Aluminum

## Rust & Corrosion Product Selection

When you're worried about rust, choosing the proper rust product for your substrate and repair needs is the most important part of completing the project. With the correct coating, converter or sealer, you're guaranteed to have a long lasting, rust free finish.

Rust Products	Corrosion Protection	Rust Conversion	Apply To Prepped Metal	Apply To Rusty Metal	Sound Dampening	Must Neutralize and Topcoat	Can Be Topcoated
Rust Preventer	✓		✓		✓		
Rust-Mort™		✓		✓		✓	
Rust-Seal™	✓	✓		✓			✓
Rust-Shield™	✓		✓	✓			
Undercoating	✓		✓		✓		
Rubberized Undercoating	✓		✓		✓		✓

## RUST EQUIPMENT

With applicators and accessories for applying rust and corrosion coatings, preventers, and converters, SEM offers the equipment to get the job done right.



### Premium Undercoat Gun

A siphon feed heavy plastic applicator for spraying bed liners, undercoatings, and rust proofing.

- Adjustable pattern
- Easy to clean
- Great for spraying truckbed liner and undercoating
- 0.5" pick up tube for thicker materials



71109 | Applicator  
71110 | Applicator and 1 Spray Wand  
71111 | Spray Wand

### Spray Wand

A 360° tip that sprays undercoating and rust proofing behind body panels.

- 28" in length to ensure full coverage
- Attaches to the **Premium Undercoat Gun**

71111 | Spray Wand



### Rust Preventer Aero Wand

Aerosol attachment 360° pattern for applying **Rust Preventer**.

- 24" in length to ensure full coverage
- Use for rust proofing with **Rust Preventer**

71120 | Aero Wand



### Economy Coating Gun

A low cost, cast aluminum siphon gun for spraying bulk undercoatings and **Rock-It Liner™**.

- Sprays a variety of products including undercoatings, truckbed liners and chip guards
- Simple operation
- Low cost



71101 | Applicator

NEARLY  
**70 YEARS**  
OF EXPERIENCE



# 70080 SHOP CABINET



Width: 25" | Height: 30" | Depth: 13"

The **70080 Shop Cabinet** is an assortment of 23 of SEM's most popular body shop products.

- Free cabinet (\$300 value)
- 13% discount over buying separately
- Includes **71119 Universal Manual Applicator**



## SHOP CABINET INCLUDES 1 EACH OF THE FOLLOWING PRODUCTS:

### Part No. Product

38398	Suff & Clean - <b>NEW!</b>
38353	Plastic & Leather Prep
38373	SEM Solve
39377	Dual-Mix™ Seam Sealer
39573	Rust Preventer
39592	Metal Bite™ Finishing Glaze
39683	Self Etching Primer - Gray
39747	Dual-Mix™ Multi-Purpose Panel Adhesive
39767	Dual-Mix™ Problem Plastic Repair Material
39777	Dual-Mix™ High-Build Self Leveling Seam Sealer
39847	Dual-Mix™ Multi-Plastic Repair Material
39977	Dual-Mix™ Panel Vibration Control Material

40377	Heavy Bodied Black Seam Sealer
40482	Bumper Bite™ Flexible Glaze
40507	Dual-Mix™ Quick Set 50
40523	Low VOC Rubberized Undercoating
40783	Copperweld™ Primer
42013	High Build Primer Surfacer - Gray
70007	Plastic Repair Contouring Tape
70070	Versa-Tip (6 Pack)
71119	Universal Manual Applicator
71120	Rust Preventer Aero Wand
77723	XXX Adhesion Promoter



### Dual-Mix Forever Warranty

When used according to directions, SEM guarantees to the purchaser that all Dual-Mix products will perform to specifications forever. This warranty covers reasonable costs for labor, loss of use of the vehicle, parts and materials only, and excludes consequential or incidental damages.

Made in the USA



semproducts.com



### CABINETS, RACKS & DISPLAYS

SEM assortments offer selections of our most popular products. They act as silent salesmen and promote SEM's commitment to quality while improving store appearance.



#### SAC Rack Aerosol Center

An assortment of our most popular aerosols used in automotive interior and exterior refinishing.

40022 | 1 Rack



#### SEM Shop Cabinet

An assortment including 23 of SEM's most popular body shop products.

70080 | 1 Cabinet

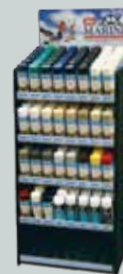
See page 43 for complete details.



#### Marine Rack Assortment

An assortment of Marine Vinyl Coat, Engine Paint and SEM prep products.

M25992 | 1 Rack



#### Classic Rack Assortment

An assortment of all Classic Coat™ colors and necessary prep materials.

17002 | 1 Rack



#### Marine Vinyl Coat™ 12 Can Assortment

Assortments of the top 12 selling Marine Vinyl Coat aerosols.

M25889 | 12 Can Assortment



#### Marine Vinyl Coat™ 30 Can Assortment

Assortments of the top selling Marine Vinyl Coat aerosols.

M25779 | 30 Can Assortment



KEEP YOUR  
EQUIPMENT &  
AEROSOLS  
SPRAYING  
LIKE NEW

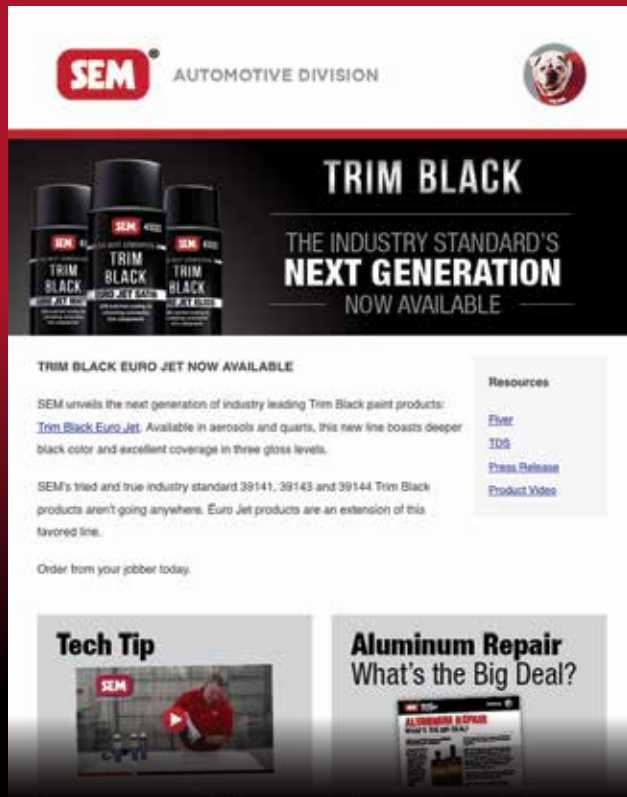
### XXX Gun Cleaner

XXX Gun Cleaner is a heavy-duty cleaning solvent and paint gun cleaner. It's strong enough to remove grease, adhesive, paint overspray and to clean spray equipment.

LEARN HOW  
[semproducts.com/clean-tips](http://semproducts.com/clean-tips)



# BE THE FIRST TO KNOW



SEM AUTOMOTIVE DIVISION

## TRIM BLACK

THE INDUSTRY STANDARD'S  
NEXT GENERATION  
NOW AVAILABLE

TRIM BLACK EURO JET NOW AVAILABLE

SEM unveils the next generation of industry leading Trim Black paint products: [Trim Black Euro Jet](#). Available in aerosols and quarts, this new line boasts deeper black color and excellent coverage in three gloss levels.


SEM's tried and true industry standard 39141, 39143 and 39144 Trim Black products aren't going anywhere. Euro Jet products are an extension of this favored line.

Order from your jobber today.


Resources

- [Filter](#)
- [TDS](#)
- [Press Release](#)
- [Product Video](#)

**Tech Tip**



**Aluminum Repair**  
What's the Big Deal?



**LEARN ABOUT  
NEW PRODUCTS,  
PROMOTIONS,  
TRAINING  
AND SOPs**



Sign up for the  
SEM Newsletter Email at:

[semproducts.com/first](https://semproducts.com/first)

# SEM School

Learn Automotive Refinishing Techniques  
from the Pros.

Stay ahead of your competition by learning about the latest automotive refinishing techniques at SEM School. It's available to professionals who use or sell SEM products. Beginner technicians will learn a lot, and experienced technicians will benefit from learning about new products and procedures. Visit our website to learn more and sign up.



[semproducts.com/semschool](https://semproducts.com/semschool)



# Made in the USA

Our products are proudly formulated and packaged in Rock Hill, South Carolina. We've been in business for nearly 70 years and we promise to continue to deliver quality American made products.

## SEM School

**LEARN AUTOMOTIVE REPAIR & REFINISHING TECHNIQUES**

Stay ahead of the competition by learning about the latest automotive refinishing techniques at **SEM School**. It's available to professionals who use or sell **SEM** products.

**GET CERTIFIED BY SEM FOR I-CAR  
LEARN MORE & SIGN UP AT  
[semproducts.com/sem-school](http://semproducts.com/sem-school)**

## In-Shop Training

**AVAILABLE FOR  
QUALIFIED COLLISION CENTERS**

We'd be happy to meet you at your shop. We can demo products, train and answer any questions. These sessions can be tailored to your needs and anyone is welcome to attend.

**CONTACT TECH SUPPORT  
FOR MORE INFORMATION  
800-831-1122**



**PHONE**

**TECH SUPPORT**  
1-800-831-1122  
**CUSTOMER CARE**  
1-866-327-7829



**EMAIL**

**TECH SUPPORT**  
[tech@semproducts.com](mailto:tech@semproducts.com)  
**CUSTOMER CARE**  
[cust\\_care@semproducts.com](mailto:cust_care@semproducts.com)



**HOURS**

**MON – THURS**  
8 a.m. – 5 p.m. EST  
**FRI**  
8 a.m. – 4:30 p.m. EST



**WEBSITE**

Visit our website  
for product info,  
Technical and  
Safety Data sheets  
[semproducts.com](http://semproducts.com)



**FACEBOOK**

Find us on  
Facebook to  
get great tips  
[facebook.com/  
semproducts](https://facebook.com/semproducts)



*The Right Choice*