



**FOR REFERENCE ONLY**  
Color chips may slightly vary in color

**BUMPER COATER™** | NO ADHESION PROMOTER REQUIRED



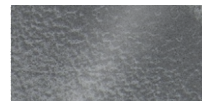
**39073** Gloss Silver  
Color Coat™ Formula: 4561



**39283** Lt Titanium Met  
Color Coat Formula: 4563



**39253** Med Titanium Met  
Color Coat Formula: N/A



**39173** Dk Smoke  
Color Coat Formula: 4307



**39183** Med Gray  
Color Coat Formula: 4296



**39193** Dk Gray  
Color Coat Formula: 4295



**39263** Dk Titanium Met  
Color Coat Formula: 4533



**39273** Charcoal Met  
Color Coat Formula: 4553



**39153** Charcoal  
Color Coat Formula: 4109



**39163** Med Smoke  
Color Coat Formula: 4305



**39103** Flexible Black  
Color Coat Formula: N/A



**39293** Honda Black  
Color Coat Formula: N/A



**39083** Gloss Black  
Color Coat Formula: N/A



**TRIM BLACK** | EXCELLENT ADHESION, NO PRIMER NEEDED ON METAL



**39033** Charcoal Metallic



**39063** Gloss Black



**39143** Black



**49153** Trim Black Ultra - Gloss



**49143** Trim Black Ultra - Satin



**49133** Trim Black Ultra - Matte

**HIGH-BUILD PRIMER SURFACER** | EXCELLENT ADHESION, FILM BUILD & FLEXIBILITY



**42003** Black



**42013** Gray



**42023** Beige



**42033** Rose



**42043** White



### STEP 1: PREP & PRIME

① If damage is present, refer to **Plastic Repair Standard Operating Procedure** first.

Clean with **Scuff & Clean** and a gray scuff pad. Rinse with water and dry with clean, lint-free cloth. Clean with **SEM Solve, Plastic & Leather Prep** or **XXX Universal Surface Cleaner**. Wipe clean in one direction with clean, lint-free cloth. Sand and prime per instructions.



### STEP 2: GUIDE COAT & SAND

Apply **Guide Coat Black** or **Premium Powder Guide Coat** to dried primer. Sand with P320 – P400 grit. Finish sanding with P600 grit.

Blow off and wipe with a tack rag.

If no texture is needed, proceed to Step 3.



### IF TEXTURE IS NEEDED

Re-clean, if necessary, with **Plastic & Leather Prep, SEM Solve** or **XXX Universal Surface Cleaner**.

Spray **Bumper Coater** as a wet bed. While it is still wet, apply **Texture Coating** in light coats 16" – 24" from surface.

- To produce bigger droplets, spray closer to the surface. To produce smaller droplets, spray farther from the surface.
- To increase spacing between droplets, spray fast. To decrease spacing between droplets, spray slow.

Allow to flash for 10 minutes.

- ① Apply additional coats in the same manner if needed to achieve OEM texture.
- ① Be sure to apply lightly enough so that raised texture droplets do not flow together.

Grainy texture: No adjustment is needed

Round texture: Lightly sand by hand with a gray scuff pad or P800 grit sandpaper

Flat texture: Sand with a block or by hand using P400 – P600 grit sandpaper

Blow off and wipe with a tack rag.

**Texture Coating** must be topcoated.



**WATCH THE VIDEO:**  
Learn how to duplicate OEM Textures

Scan the QR code or go to [semproducts.com/sfcc](http://semproducts.com/sfcc)



### STEP 3: PAINT

Apply **Bumper Coater** or **Factory Pack™** per instructions.

## PRODUCT LIST

### PREP

| Part  | Product                       | Size        |
|-------|-------------------------------|-------------|
| 38391 | Scuff & Clean                 | Gal Pump    |
| 38398 | Scuff & Clean                 | 16 oz. Tube |
| 38371 | SEM Solve                     | Gallon      |
| 38373 | SEM Solve                     | 20 oz. Aero |
| 38374 | SEM Solve                     | Square Qt   |
| 38351 | Plastic & Leather Prep        | Gallon      |
| 38353 | Plastic & Leather Prep        | 16 oz. Aero |
| 38354 | Plastic & Leather Prep        | Square Qt   |
| 77771 | XXX Universal Surface Cleaner | Gallon      |
| 77774 | XXX Universal Surface Cleaner | Quart       |

### HIGH-BUILD PRIMER SURFACER AEROSOLS

| Part  | Color | Size        |
|-------|-------|-------------|
| 42003 | Black | 20 oz. Aero |
| 42013 | Gray  | 20 oz. Aero |
| 42023 | Beige | 20 oz. Aero |
| 42033 | Rose  | 20 oz. Aero |
| 42043 | White | 20 oz. Aero |

### GUIDE COAT

| Part  | Product                   | Size        |
|-------|---------------------------|-------------|
| 38203 | Guide Coat Black          | 16 oz. Aero |
| 38253 | Premium Powder Guide Coat | 16 oz. Aero |

### TEXTURE

| Part  | Product                  | Size        |
|-------|--------------------------|-------------|
| 39853 | Texture Coating          | 20 oz. Aero |
| 39854 | Texture Coating          | Quart       |
| 39793 | Heavy Texture Chip Guard | 20 oz. Aero |
| 39803 | Clear Chip Guard         | 20 oz. Aero |
| 39804 | Clear Chip Guard         | Cone Quart  |
| 39813 | Satin Black Chip Guard   | 20 oz. Aero |
| 39814 | Satin Black Chip Guard   | Quart       |

### PAINT

| Part          | Product                              | Size        |
|---------------|--------------------------------------|-------------|
| 39101         | Bumper Coater - Black                | Gallon      |
| 39104         | Bumper Coater - Black                | Quart       |
| 39101-LV      | Low VOC Flexible Bumper Coater Black | Gallon      |
| 39104-LV      | Low VOC Flexible Bumper Coater Black | Quart       |
| 39073 - 39293 | Bumper Coater - 13 Colors            | 16 oz. Aero |
| 19013 - 19543 | Factory Pack - 40 Colors             | 16 oz. Aero |

Go to [semproducts.com](http://semproducts.com) for a complete list of sizes and colors.

SEM Products, Inc.  
Rock Hill, SC 29730  
Tech Support: 1-800-831-1122  
Customer Care: 1-866-327-7829  
[semproducts.com](http://semproducts.com)

